

## APPENDIX A

The following references, of the issue in effect, in addition to those references contained in TM 55-1520-210-10, Appendix A, are required for use by organizational maintenance personnel in performance of their duties.

NUMBER	TITLE
DA Form 2408-10	Equipment Components Register
DA Form 2408-13	Aircraft Inspection and Maintenance Record
DA Form 2408-14	Uncorrected Fault Record
DA Form 2408-16	Component Installation and Removal Record
DA PAM 310-7	U.S. Army Equipment and Index of Modification Work Orders
TB AVN 23-16	Test Flights and Maintenance Operational Checks for Army Aircraft
TB 55-1500-300-25	Aircraft Accessory Replacement and Reuse Procedure
TB 55-1500-308-25	First Aid Kit, Airplane, Without Narcotics
TB 55-2800-200-30/1	T53 Engine Inspection Guide
TB 55-9150-200-25	Engine and Transmission Oils, Fuels and Additives for Army Aircraft
TB 746-93-2	Painting and Marking of Army Aircraft
TB 1520-208-10/3	Operating Instructions: Quad 7.62 mm machine gun helicopter armament subsystem XM6E3 UH-1B
TM 1-2R-1-83	Removal of Rust from Ferrous Aircraft Engine Parts
TM 1-15H1-2-10-3	Overhaul Instructions: Aircraft heaters and accessories (Janitrol Aircraft - Automotive Division) (Surface Combustion Corp.)
TM 3-220	Chemical, Biological and Radiological (CBR) Decontamination
TM 9-1005-243-12	Operator and organizational maintenance manual (including repair parts and special tools list): Armament subsystem helicopter, 7.62 mm machine gun, quad M6 (XM6E3) (Used on UH-1B helicopters)
TM 11-6140-203-12	Nickel and Cadmium Storage Batteries
TM 38-230	Preservation, Packing and Packing of Military Supplies and Equipment
TM 38-750	The Army Equipment Record System and Procedures
<b>ARMY AVIATION MAINTENANCE ENGINEERING MANUALS</b>	
NUMBER	TITLE
TM 55-403	Fundamentals of Army Helicopter Maintenance
TM 55-1500-311-25	General Practices

NUMBER	TITLE
TM 55-405-2	Aircraft Hardware and Materials
TM 55-405-3	Maintenance of Aircraft Systems
TM 55-405-4	Aircraft Structural Repair
TM 55-405-5	Aircraft Engines
TM 55-405-6	Aircraft Maintenance Tools
TM 55-405-7	Shop Practices
TM 55-405-8	Ground Support Practices
TM 55-405-9	Weight and Balance
TM 55-1520-210-20P	Repair Parts and Special Tools List
TM 55-4920-244-15	Organizational, DS, GS, and Depot Maintenance Manual: Tester Exhaust Temperature, Model BH112JA36.
TM 750-134	Procedures for Rapid Deployment Redeployment and Retrogradation of U.S. Army Rotary Wing Aircraft
TM 750-199	Procedures for Rapid Deployment Redeployment and Retrogradation of U.S. Army Aircraft Components, Spare Parts, and Support Equipment (Class II (A) and Class IV (A) Supplies)

## APPENDIX B

## MAINTENANCE ALLOCATION CHART

## SECTION I - INTRODUCTION

## B-1. MAINTENANCE ALLOCATION CHART.

## B-2. INTRODUCTION.

## B-3. GENERAL INFORMATION.

a. The maintenance allocation chart assigns maintenance functions to the lowest level of maintenance based on past experience and the following consideration:

- (1) Skills available.
- (2) Time required.
- (3) Tools and test equipment required and/or available.

b. Only the lowest level of maintenance authorized to perform a maintenance function is indicated.

c. A maintenance function assigned to a maintenance level will automatically be authorized to be performed at any higher maintenance level.

d. A maintenance function that cannot be performed at the assigned level of maintenance for any reason may be evacuated to the next higher maintenance organization. Higher maintenance levels will perform the maintenance functions of lower maintenance levels when required or directed by the appropriate commander.

e. The assignment of a maintenance function will not be construed as authority to carry the associated repair parts in stock. Authority to requisition, stock, or otherwise secure necessary repair parts will be as specified in the repair parts appendix.

f. Normally there will be no deviation from the assigned level of maintenance. In cases of operational necessity, maintenance functions assigned to a maintenance level may, on a one-time basis at the request of the lower maintenance level, be specifically authorized by the Maintenance Officer of the level of maintenance to which the function is assigned. The special tools, equipment, etc., required by the lower level of maintenance to perform this function will be furnished by the maintenance level to which the function is assigned. This transfer of a maintenance function to a lower maintenance level does not relieve the higher maintenance level of the responsibility of the function. The higher

level of maintenance will provide technical supervision and inspection of the function being performed at the lower level.

g. Organizational through depot maintenance of the U.S. Army Electronics Command Equipment will be performed by designated U.S. Army Electronics Command personnel.

h. Changes to the Maintenance Allocation Chart will be based on continuing evaluation and analysis by responsible technical personnel and on reports received from field activities.

## B-4. DEFINITIONS.

a. **INSPECT:** To determine serviceability of an item by comparing its physical, mechanical, and electrical characteristics with established standards.

b. **TEST:** To verify serviceability and to detect electrical or mechanical failure by the use of test equipment.

c. **SERVICE:** To clean, to preserve, to charge, and to add fuel, lubricants, cooling agents and air.

d. **ADJUST:** To rectify to the extent necessary to bring into proper operating range.

e. **ALIGN:** To adjust specified variable elements of an item to bring to optimum performance.

f. **CALIBRATE:** To determine the corrections to be made in the readings of instruments or test equipment used in precise measurement. Consists of the comparison of two instruments, one of which is a certified standard of known accuracy, to detect and adjust any discrepancy in the accuracy of the instrument or test equipment being compared with the certified standard.

g. **INSTALL:** To set up for use in an operational environment such as an emplacement, site or vehicle.

h. REPLACE: To replace unserviceable items with serviceable assemblies, sub-assemblies or parts.

i. REPAIR: To restore an item to serviceable condition through correction of a specific failure or unserviceable condition. This includes, but is not limited to, inspections, cleaning, preserving, adjusting, replacing, welding, riveting and strengthening.

j. OVERHAUL: To restore an item to a completely serviceable condition as prescribed by maintenance serviceability standards prepared and published for the specific item to be overhauled.

k. REBUILD: To restore an item to a standard as nearly as possible to the original or new condition in appearance, performance, and life expectancy. This is accomplished through the maintenance technique of complete disassembly of the item, inspection of all parts or components, repair or replacement of worn or unserviceable elements (items) using original manufacturing tolerance and specifications and subsequent reassembly of the item.

#### B-5. SYMBOLS.

a. The symbols "O, F, H and D" represent: Organizational maintenance (O), Direct Support maintenance (F), General Support Maintenance (H), and Depot Maintenance (D) and when placed on the maintenance allocation chart, indicates the lowest level of maintenance responsible for performing the particular maintenance function. Maintenance levels higher than the level of maintenance marked by the symbol are authorized to perform the indicated function.

b. The symbol "%%" applies to organizational maintenance and indicates that the particular maintenance function may be performed provided it is specifically authorized by the direct support maintenance officer. In no case will the direct support maintenance officer require the accomplishment of a "%%" maintenance function by an organization or unit and in no case will a "%%" function authorize stockage of parts at organization level.

c. The symbol (\*) in column 3 and 4 of the MAC denotes that a special tool is required to perform the indicated maintenance function.

d. The symbols (1) through (10) in column 3 of the MAC refer to footnotes on page (17) of the MAC.

## SECTION II CHARTS

MAINTENANCE ALLOCATION CHART FOR YUH-1D, UH-1D and UH-1H (AR 310-3)														
(1) GROUP NO	(2) FUNCTIONAL GROUP	(3) MAINTENANCE FUNCTION										(4) TOOLS AND EQUIPMENT	(5) REMARKS	
		INSPECT	TEST	SERVICE	ADJUST	ALIGN	CALIBRATE	INSTALL	REPLACE	REPAIR	OVERHAUL			REBUILD
00	AIRCRAFT													
	Clean													
	Moor													
	Tow													
	Jack													
	Preservation													
	Weight & Balance													
	Complete Painting													
01	AIRFRAME													
	Sheet Metal & Structural Members Not Requiring Jigs & Fixtures	O							F	F				
	Sheet Metal & Structural Members Requiring Jigs & Fixtures	O						H <sub>5</sub>	H <sub>5</sub>					
	Fuselage Assembly													
	Windshields	O		O				O	O					
	Windshield Wiper Motors, Converter Assembly, Linkages, Blade Drive Unit, Blades and Cover	O		O				O	F	H <sub>5</sub>				
	Fairings, Cowlings, Access Doors & Panels	O		O				O	F					
	Windows, Fixed & Sliding	O		O	O			O	F					
	Doors	O		O				O	F					
	Cockpit & Cabin Floors & Floor Access Panels	O						O	F					

MAINTENANCE ALLOCATION CHART FOR YUH-1D, UH-1D and UH-1H (AR 310-3)															
(1) GROUP NO	(2) FUNCTIONAL GROUP	(3) MAINTENANCE FUNCTION											(4) TOOLS AND EQUIPMENT	(5) REMARKS	
		INSPECT	TEST	SERVICE	ADJUST	ALIGN	CALIBRATE	INSTALL	REPLACE	REPAIR	OVERHAUL	REBUILD			
01	Service Platforms & Cables, Entrance & Service Steps, Ladders	O							F	F					
	Fuselage Furnishings														
	Crew & Passenger Seats & Cushions	O		O	O				O	F					
	Seat Belts & Shoulder Harnesses	O		O					O						
	Inertia Reels	O		O <sub>1</sub>					O						
	Curtains, Upholstery, Sound Proofing & Sun Visor	O		O					O	F					
	Engine Mount Support Arms (Brace Rods, Tripod & Bipod)	O							F	F					
	Engine Mount Trunnion and Bearing Assembly	O							O	F					
	Engine Floor Mount Attaching Brackets	O							F						
	Tail Boom & Pylons	O							F	F	H <sub>5</sub>				
	Synchronized Elevator	O							O	F					
	Tail Rotor Guards, Skids & Bumpers	O							O	F					
	02	LANDING OR ALIGHTING GEAR													
		Skid, Cross Tubes & Shoes	O							O	F				
Ski & Float Installation		O	F	O					F	F					
Ground Handling Wheel Actuating Mechanism		O		O					O	F					
Wheels, Tires and Tubes		O		O					O	O					

**MAINTENANCE ALLOCATION CHART  
FOR  
YUH-1D, UH-1D and UH-1H**

*(AR 310-3)*

(1) GROUP NO	(2) FUNCTIONAL GROUP	(3) MAINTENANCE FUNCTION										(4) TOOLS AND EQUIPMENT	(5) REMARKS		
		INSPECT	TEST	SERVICE	ADJUST	ALIGN	CALIBRATE	INSTALL	REPLACE	REPAIR	OVERHAUL			REBUILD	
03	ENGINE AND RELATED SYSTEMS														
	Engine as Complete Assembly	O	O			O			%%	O		D			Turbine Engine Test Stand at H <sub>5</sub>
	Fuel and Oil Hoses	O							O						
	Electrical Harness & Ignition Leads	O							O						
	Ignition Exciter	O							O						
	Igniter Plugs	O							O						
	Fuel Control Assembly	O		O	O				O			D			
	Electrical Solenoid Valve	O							O						
	Overspeed Governor Assembly	O							O			D			
	Fuel System Filter and Strainers	O		O					O						
	Starting Fuel Solenoid Valve	O							O						
	Main Fuel Manifolds	O							O		F				
	Starting Fuel Manifold	O							O						
	Starting Fuel Nozzles	O							O		H				
	Oil Pump	O			O				O			H			
	Bearing Housing Oil Strainers	O		O					O						
	Main Oil Filter	O		O					O		O				
Engine Oil Tank	O		O					O		F					
Engine Oil Coolers	O		O					O		F					
Engine Oil Cooler Blower	O		O					O		F					

MAINTENANCE ALLOCATION CHART FOR YUH-1D, UH-1D and UH-1H (AR 310-3)													
(1) GROUP NO	(2) FUNCTIONAL GROUP	(3) MAINTENANCE FUNCTION										(4) TOOLS AND EQUIPMENT	(5) REMARKS
		INSPECT	TEST	SERVICE	ADJUST	ALIGN	CALIBRATE	INSTALL	REPLACE	REPAIR	OVERHAUL		
03	Interstage Airbleed Actuator	O							O	F	D		
	Interstage Airbleed Band	O				O			O	O			
	Interstage Airbleed Hoses	O							O				
	Inlet Guide Vane Actuator Assembly	O			O				O	F			
	Inlet Guide Vane Actuator Hose Assembly	O							O				
	Inline Valve	O							O	F	H		
	Airbleed Connecting Manifold and Adapter	O							O				
	Exhaust Thermocouple Harness	O	F						O				
	Combustion Chamber Drain Valve	O							O				
	Flow Divider & Dump Valve Assembly	O							O	F			
	Accessory Drive Gearbox	O							O	O*	D		*Limited to replacement of seals
	Overspeed Governor and Tachometer Drive Assembly	O				O*			O	F			*Pressure regulating valve
	Torquemeter Booster Pump	O							O	F	H		
Oil Transfer Tubes (For Reduction Gears)	F*							F	F			*Durir special inspection	



**MAINTENANCE ALLOCATION CHART  
FOR  
YUH-1D, UH-1D and UH-1H**

*(AR 310-3)*

(1) GROUP NO	(2) FUNCTIONAL GROUP	(3) MAINTENANCE FUNCTION										(4) TOOLS AND EQUIPMENT	(5) REMARKS				
		INSPECT	TEST	SERVICE	ADJUST	ALIGN	CALIBRATE	INSTALL	REPLACE	REPAIR	OVERHAUL			REBUILD			
03	Output Shaft Seal	O*							F							* For leakage	
	Reduction Carrier and Gear Assembly	F*							F	F**	D					* During special inspection ** Limited to replacement of parts	
	Overspeed Governor and Tachometer Drive Support and Gear	F							F	F							
	Accessory Gear Carrier	D							F		D						
	Combustion Chamber Housing	F							F	F							
	Combustion Chamber Liner	F							F	F*						* Stop drill cracks	
	Fuel Vaporizers	F							F	F							
	Power Turbine Nozzle and Cylinder	F							F	F							
	Fireshield	F							F								
	Exhaust Diffuser	O							F	H							
	Power Turbine Rotor Assembly	O							F	F							
	Gas Producer Turbine Rotor Assembly	F							F	F							
	Gas Producer Turbine Nozzle and Flange	F							F	F							
	Combustion Chamber Deflector	F							F	H							

**MAINTENANCE ALLOCATION CHART  
FOR  
YUH-1D, UH-1D and UH-1H**

*(AR 310-3)*

(1) GROUP NO	(2) FUNCTIONAL GROUP	(3) MAINTENANCE FUNCTION										(4) TOOLS AND EQUIPMENT	(5) REMARKS				
		INSPECT	TEST	SERVICE	ADJUST	ALIGN	CALIBRATE	INSTALL	REPLACE	REPAIR	OVERHAUL			REBUILD			
		03	Diffuser Housing	O							D			F			
	Rear Bearing Seal and Seal Housing	F							F								
	Rear Bearing Seal Liner & Forward Rear Cones	F							F								
	Impeller Housing	O							F	F							
	Compressor Housing	O							F	F							
	Compressor Stator Vanes	F							F	F							
	Compressor Rotor Blades	O							F	F							
	Power Shaft	F*							D								*During special inspection
	Inlet Housing	O							D	F							
	Inlet Guide Vanes	O							D	F							
	Variable Inlet Guide Vane Assembly	O							D	F							
	Engine Oil Cooler Fan Assembly	O		O					O	F	H						
	Engine Control Linkage	O			O				O	O							
	Droop Compensator	O		O	O				O	O							
	Actuator	O			O				O	O	H						
	Particle Separator (Sand & Dust)	O		O				O	O	F							
04	ROTOR, TRANSMISSION SYSTEMS & CLUTCHES																
	Mast Assembly	O							F	F	H						

**MAINTENANCE ALLOCATION CHART  
FOR  
YUH-1D, UH-1D and UH-1H**

*(AR 310-3)*

(1) GROUP NO	(2) FUNCTIONAL GROUP	(3) MAINTENANCE FUNCTION										(4) TOOLS AND EQUIPMENT	(5) REMARKS			
		INSPECT	TEST	SERVICE	ADJUST	ALIGN	CALIBRATE	INSTALL	REPLACE	REPAIR	OVERHAUL			REBUILD		
		04	Main Rotor Blade	O		O <sub>2</sub>	O <sub>2</sub>				O			%%		
	Main Rotor Hub & Blades	O		O	O	F			O	F	D					
	Swashplate & Support Assembly	O		O					O	F	H					
	Stationary and/or Rotating Scissors Assembly	O		O					O	F	H					
	Tail Rotor Assembly	O		O	F <sub>4</sub>				O	F						
	Tail Rotor Blades	O		O	O <sub>2</sub>				F	%%						
	Tail Rotor Hubs	O		O					F	F						
	Main Transmission	O	O <sub>1</sub>	O					F	F	D					
	Tail Rotor, 42° & 90° Gear Boxes	O	O <sub>1</sub>	O					O	F	D					
	Quill Assembly	O							F	F	D					
	Main Drive Shaft	O		O		O			O	F	H					
	Tail Rotor Drive Shaft	O							O	O*						*Minor repair only
	Tail Rotor Drive Shaft Hanger Assembly	O		O					O	F						
	Transmission or Gear Box Lubrication System															
	Pumps	O							%%		H					
	Oil Cooler	O		O					O	F						
	Filters & Screens	O		O					O							
	Magnetic Plugs and Chip Detectors	O		O					O							
	Valves	O			O				O							
	Hoses, Lines and Fittings	O	F						O							

**MAINTENANCE ALLOCATION CHART  
FOR  
YUH-1D, UH-1D and UH-1H**

*(AR 310-3)*

(1) GROUP NO	(2) FUNCTIONAL GROUP	(3) MAINTENANCE FUNCTION										(4) TOOLS AND EQUIPMENT	(5) REMARKS		
		INSPECT	TEST	SERVICE	ADJUST	ALIGN	CALIBRATE	INSTALL	REPLACE	REPAIR	OVERHAUL			REBUILD	
		06	<b>HYDRAULIC SYSTEMS</b>												
	Hydraulic Pumps and Motors	O		O					O	F	H				
	Tanks and Reservoirs	O		O					O	F					
	Accumulators	O		O					O	F	H <sub>5</sub>				
	Actuating Cylinders	O		O	O				O	F	H				
	Valves; Motor Operated Gate, Solenoid, Actuating, Selector Four Way Dump, Irreversible and Flow Regulators	O		O	O				O	F	H <sub>5</sub>				
	Valves; Transfer, Control Sequence, Reducing, Relief, Priority and Drain	O		O	O				O	F					
	Valves; Check, Manual and Shut-off	O		O					O						
	Hydraulic Filters	O		O					O	F					
	Filter Elements	O		O <sub>7</sub>					O						
	Flight Control Actuating Cylinders, Servos and Power Cylinders	O	O <sub>1</sub>	O	O				O		F	H			
	Hoses, Tubing & Fittings	O					O		O						
08	<b>AIRCRAFT INSTRUMENTS</b>														
	Flight and Navigation														
	Airspeed Indicator	O	F	O					O			H			
	Altimeter	O	F	O					O			H			
	Vertical Velocity Indicator	O	F	O					O			H			
	Compass, Standby	O	O	O				O <sub>8</sub>	O			H			
	Attitude Indicator	O		O					O			H			

**MAINTENANCE ALLOCATION CHART  
FOR  
YUH-1D, UH-1D and UH-1H**

*(AR 310-3)*

(1) GROUP NO	(2) FUNCTIONAL GROUP	(3) MAINTENANCE FUNCTION										(4) TOOLS AND EQUIPMENT	(5) REMARKS		
		INSPECT	TEST	SERVICE	ADJUST	ALIGN	CALIBRATE	INSTALL	REPLACE	REPAIR	OVERHAUL			REBUILD	
08	Amplifier Attitude Indicator	O		O					O			H			
	Turn and Slip Indicator	O		O					O			H			
	Directional Gyro Indicator	O		O					O			H			
	Pitot/Static System	O	F	O					O						
	Pitot Tube	O	O <sub>1</sub>	O					O						
	Engine, Rotor & Transmission Instruments														
	Exhaust Temperature Indicator	O	F	O					O			H			
	Engine Oil Temperature Indicator	O		O					O	H	H				
	Transmission Oil Temperature Indicator	O		O					O	H	H				
	Oil Pressure, Oil Temperature & Fuel Pressure Indicator (Engine Gauge Unit)	O		O					O		H				
	Engine Oil Pressure Indicator	O		O					O		H				
	Fuel Pressure Gauge	O		O					O		H				
	Engine & Rotor Tachometer Dual	O	F	O					O		H				
	Gas Producer Tachometer	O	F	O					O		H				
	Torque Meter	O		O					O		H				
	Miscellaneous Instruments														
	Clock	O		O					O		H <sub>5</sub>				
Free Air Temperature Indicator	O		O					O							
Volt, Amp & Load Meters	O		O					O							

MAINTENANCE ALLOCATION CHART FOR YUH-1D, UH-1D and UH-1H (AR 310-3)															
(1) GROUP NO	(2) FUNCTIONAL GROUP	(3) MAINTENANCE FUNCTION										(4) TOOLS AND EQUIPMENT	(5) REMARKS		
		INSPECT	TEST	SERVICE	ADJUST	ALIGN	CALIBRATE	INSTALL	REPLACE	REPAIR	OVERHAUL			REBUILD	
08	Transmitters, Sensing Units & Tachometer Generators														
	Transmitters, Pressure	O		O					O			H			
	Temperature Sensing Bulbs and Thermocouples	O	F	O					O						
	Tachometer Generators	O	F						O		H				
	Fuel Quantity Measuring System	O	O				O								
	Fuel Quantity Indicator	O		O					O		H <sub>5</sub>				
	Fuel Quantity Transmitter	O							O						
09	Tank Sensors, Probes & Units	O							O		H				
	ELECTRICAL SYSTEM, MAIN (AC & DC) SWITCHES, CIRCUIT BREAKERS SHOCK MOUNTS, FUSES	O							%%						
	Receptacles, Circuits, Lead Connectors, Plugs	O							%%		O				
	Relays, Shunts, Rheostats, Flasher Units, Warning Horn	O							%%						
	DC Components														
	Battery	O		O					O						
	Generators & Starter	O	O <sub>1</sub>						O	F	H				
	Motors & Actuators	O			O				O	F	H				
	Magnetic Brake	O							O	F	H				
	Voltage Regulator	O	O <sub>1</sub>		O				O	F					
															Note 9

**MAINTENANCE ALLOCATION CHART  
FOR  
YUH-1D, UH-1D and UH-1H**

*(AR 310-3)*

(1) GROUP NO	(2) FUNCTIONAL GROUP	(3) MAINTENANCE FUNCTION										(4) TOOLS AND EQUIPMENT	(5) REMARKS	
		INSPECT	TEST	SERVICE	ADJUST	ALIGN	CALIBRATE	INSTALL	REPLACE	REPAIR	OVERHAUL			REBUILD
		09	Exterior Lighting System											
	Navigation & Anti-Collision	O		O					O	F				
	Landing & Searchlights	O		O	O				O	F	H			
	Interior Lighting System													
	Instrument & Utility	O							O	O				
	Master Caution Panel	O		O					O	F				
	AC Components													
	Inverters	O							O					
	Transformers & Rectifier	O							O	F	H			
	RPM Warning System	O <sub>1</sub>	O <sub>1</sub>		O				O	F	H			
10	FUEL SYSTEMS, MAIN TANKS & CELLS	O	F	O					F	F				
	Ejector Pumps	F							F					
	Pumps; Boost & Transfer	O	O <sub>1</sub>						O	H				
	Main Fuel Valve	O							O	F	H			
	Main Fuel Valve	O							O	F	H			
	Valves; Drain, Shutoff	O							O					
	Screens, Filters & Strainers	O	O <sub>7</sub>						O					
	Auxiliary Fuel Tanks	O		O				O	O	F				
	Hose Tubing & Fittings	O							O					
11	FLIGHT CONTROLS SYSTEM REQUIRING RIGGING AND/OR LINE DRILLING AND REAMING													
	Bell Cranks, Torque Tubes & Quadrants	O			O <sub>3</sub>				O	F				

Note 9

MAINTENANCE ALLOCATION CHART FOR YUH-1D, UH-1D and UH-1H (AR 310-3)														
(1) GROUP NO	(2) FUNCTIONAL GROUP	(3) MAINTENANCE FUNCTION										(4) TOOLS AND EQUIPMENT	(5) REMARKS	
		INSPECT	TEST	SERVICE	ADJUST	ALIGN	CALIBRATE	INSTALL	REPLACE	REPAIR	OVERHAUL			REBUILD
11	Push and Pull Rods, Links & Rod End Bearings	O			O <sub>3</sub>				O	F				
	Control Cables and Pulleys	O		O	O <sub>3</sub>				O					
	NOT REQUIRING RIGGING BELL CRANKS, TORQUE TUBES, & QUADRANTS	O	O <sub>1</sub>						O					
	Push & Pull Rods, Links & Rod End Bearings	O	O <sub>1</sub>		O				O					
	Control Cables and Pulleys	O	O <sub>1</sub>	O					O					
	Cyclic Control Sticks	O			O <sub>3</sub>				O	F				
	Collective Pitch and Foot Pedal Mechanism	O			O <sub>3</sub>				O	F				
12	UTILITY SYSTEM													
	Heater Units	O	O <sub>1</sub>	O					O	F	H			
	Blowers	O		O					O	F				
	Heater Fuel Control	O							O	F	H			
	Valves, Solenoid & Manual	O							O					
	Ignition Unit	O							O	F	H			
	Fuel Filters	O		O					O					
	Temperature Controls	O							O	F				
	Air Pressure Switches	O							O					
	Detection Loops, Thermocouples and Sensing Elements	O	F						O	F				
	Anti-Icing and Heater Ducts	O	O						F					
	Anti-Icing System, Hot Air Valves	O							O	F	H			



**MAINTENANCE ALLOCATION CHART  
FOR  
YUH-1D, UH-1D and UH-1H**

*(AR 310-3)*

(1) GROUP NO	(2) FUNCTIONAL GROUP	(3) MAINTENANCE FUNCTION										(4) TOOLS AND EQUIPMENT	(5) REMARKS	
		INSPECT	TEST	SERVICE	ADJUST	ALIGN	CALIBRATE	INSTALL	REPLACE	REPAIR	OVERHAUL			REBUILD
17	CARGO & PERSONNEL HANDLING LITTERS, TROOP SEATS & TIE-DOWN ASSEMBLIES	O		O					O	F				
	Cargo Suspension System	O		O					O	F				
	Cargo Hook	O	O <sub>1</sub>	O	O <sub>4</sub>				O	F				
	Winches/Hoists	O	O <sub>1</sub>	O					O	F	H			
	Winch Gear Box	O		O					F	F	H			
	Cable Cutting & Emergency Release Systems	O		O					O	F				
19	AVIONICS													
	Communications & Navigations													Note 9
30	ARMAMENT EQUIPMENT													Note 9
60	BULK MATERIALS LIST													
70	MAINTENANCE SUPPLIES													
	Dye Penetrant Inspection													O
	Magnaflux & Hardness Testing													F
	Heat Treat													H <sub>5</sub>
	Cleaning													O
	Preservation & Depreservation													O
	Cadmium Plating													H <sub>5</sub>
	Chrome Plating													H <sub>5</sub>
	Spot Painting													O
	Welding & Brazing													F

MAINTENANCE ALLOCATION CHART FOR YUH-1D, UH-1D and UH-1H (AR 310-3)													
(1) GROUP NO	(2) FUNCTIONAL GROUP	(3) MAINTENANCE FUNCTION										(4) TOOLS AND EQUIPMENT	(5) REMARKS
		INSPECT	TEST	SERVICE	ADJUST	ALIGN	CALIBRATE	INSTALL	REPLACE	REPAIR	OVERHAUL		
	<p>NOTES:</p> <ol style="list-style-type: none"> <li>1. Maintenance Operational Check (Ref TB-AVN-23-16)</li> <li>2. Tracking</li> <li>3. Rigging</li> <li>4. Balance</li> <li>5. Normally Depot Function. However, where facilities, skills, equipment and test capabilities are authorized at "H" level, this function is authorized.</li> <li>6. N/A</li> <li>7. Sonic Cleaning of Reusable Porous Filters</li> <li>8. Compass Swing</li> <li>9. For all maintenance allocations and functions refer to the maintenance allocation chart in applicable TM</li> <li>10. If the transformers and rectifiers are not AVCOM managed items, use Note 9</li> </ol>												

## APPENDIX C

## AIRCRAFT INVENTORY MASTER GUIDE

## C-1. AIRCRAFT INVENTORY MASTER GUIDE.

## C-2. INTRODUCTION.

## C-3. GENERAL INFORMATION.

a. The purpose of Appendix C is to establish those items of installed or loose equipment required by, and authorized for using organizations to accomplish their primary or alternate mission, and to standardize present inventory procedures, using the inventory master guide to determine the inventoriable items of installed and/or loose equipment authorized and required of the designated mission of the aircraft. Insofar as possible, items of equipment are listed in the sequence of their physical location within the aircraft area.

b. Aircraft inventory is subject to change, as a result of authorized changes (MWO's), addition or deletions of property for special missions requirements; therefore, the selection of items of inventory from the inventory master guide may or may not provide a complete inventory list. When it is known that the master guide does not provide a complete inventory list, it will be necessary to research authorized changes (MWO's) and local command directives in order to compile an accurate and exact inventory list.

c. When the compilation of the inventory list is accomplished, this list will be entered on DA Form 2408-17 "Aircraft Inventory Records." For preparation and use of this form, refer to TM 38-750.

C-4. SECURITY. It is desired that inventory records be unclassified. Therefore when equipment bearing a security classification or the installation of unclassified equipment is of a confidential or secret nature, accomplishment of the classification will be in accordance with existing security regulations.

## C-5. INVENTORIABLE ITEMS.

**Note**

The selection of inventoriable items is without regard to the agency, governmental or contractual, furnishing the items.

## a. Items to be listed are:

(1) Items essential to the execution of the designated mission of the aircraft, such as electronic, photographic, armament, special mission instruments and safety and comfort equipment.

(2) Loose equipment delivered with the aircraft and items subject to pilferage or readily converted to personal use.

(3) Modification kits which are issued or distributed to owning organizations for installation and which are not immediately placed in-work will be recorded on the affected aircraft DA Form 2408-17 (Aircraft Inventory Record) and identified as loose equipment until modification is completed.

(4) Equipment required for operation in special environment.

## b. Items to be excluded are:

(1) Non-accountable items coded as expendable in the applicable stock lists.

(2) Personal issue or furnished on unit allowance or other authority.

(3) Items or components considered basic or integral parts of the airframe or basic aircraft such as engines, propellers, wheels and standard instrument.

(4) Technical publications, check lists and aircraft forms.

## C-6. PERIODS OF INVENTORY.

**Note**

Inventoriable items will be checked against the Aircraft Inventory Record (DA Form 2408-17) at the following periods:

a. Upon receipt of the aircraft.

b. Prior to transfer of the aircraft to another organization.

c. Upon placing aircraft in storage and upon removing from storage. Aircraft need not be inventoried while in storage.

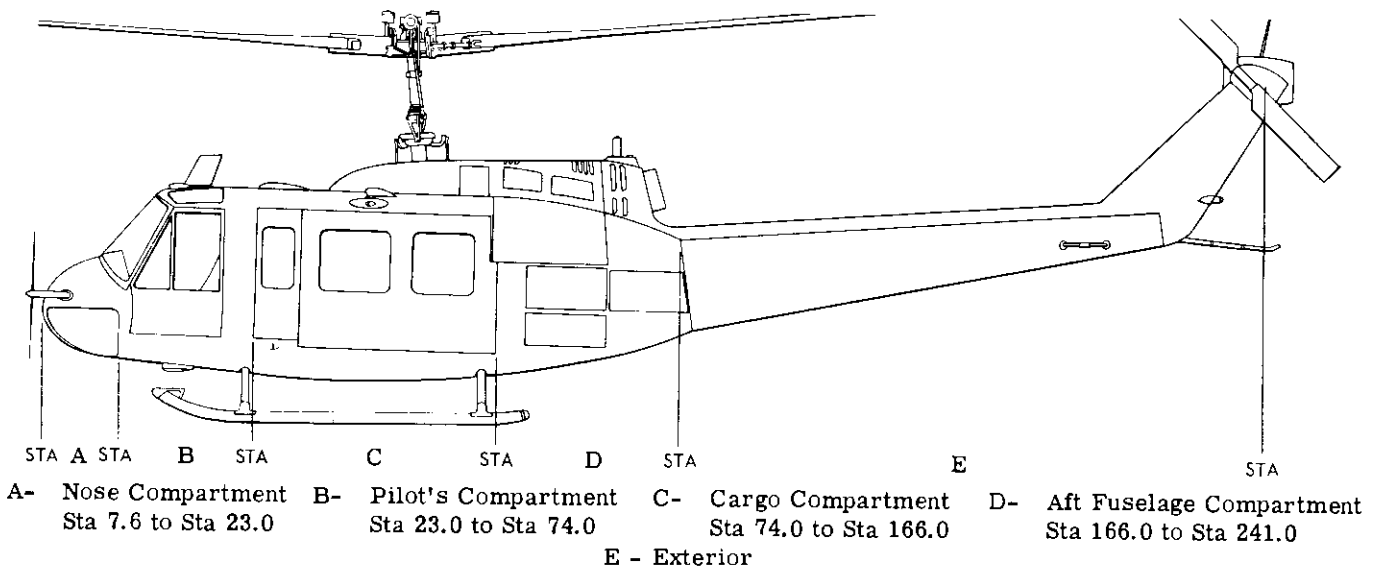
d. Twelve (12) months elapsed time since last inventory.

e. Loose equipment shipped under separate cover is inventoried upon transfer by the sending activity and immediately upon receipt by the receiving activity.

## C-7. INVENTORY ITEMS LIST. (Refer to figure C-1.)

**Note**

Only those items listed which are installed or assigned to a particular aircraft are to be listed on the DA Form 2408-17, "Aircraft Inventory Record" for the aircraft.



Nomenclature	Aircraft Series and Number of Items Normally Installed		Remarks
	UH-1D/H		
Section A - Nose Compartment			
AN/ARA-31	FM Homing	1	
AN/ARC-44	FM Radio Set	1	
AN/ARC-51X	UHF Radio Set	1	FY-63 UH-1D
AN/ARC-55	UHF Radio Set	1	
AN/ARN-5g	ADF	1	
AN/ARC-73	UHF Radio Set	1	
R-1041/ARN	Marker Beacon	1	
T-366/ARC	VHF Transmitter	1	
AN/ARC-54	FM Radio Set	1	FY-64 UH-1D
Section B - Pilot's Compartment			
C-1611/AIC	Intercom	3	FY-63 UH-1D
SB-329/AR	Intercom	3	
Clock 1-7/8 Inch Dial: A-13A	Type	1	
Compass Magnetic: Standby	Pilot	1	
Pilot Seat and Back Cushions		1	
Copilot Seat and Back Cushions		1	
Pilot Seat Belt and Shoulder Harness		1	
Copilot Seat Belt and Shoulder Harness		1	
Fire Extinguisher:	Vaporizing Liquid Type	1	
Blackout Curtains		3	

205070-42-1

Figure C-1. Inventory items list component diagram (Sheet 1 of 2)

Nomenclature	Aircraft Series and Number of Items Normally Installed		Remarks
	UH-1D/H		
Section C - Cargo Compartment			
H-101/U	Mic-Headset	1	
First Aid Kits		4	
Medical Attendant Seat		1	FY64 UH-1D
Passenger Seats Against Firewall		3	
Passenger Seat Belts Against Firewall		5	
Passenger Seats: Forward Arrangement		2	Includes Medical Attendants Seat Belt
Passenger Seat Belts: Forward Arrangement		2	
Passenger Seats: Aft		2	
Passenger Seat Belts: Aft		4	
Litter Rack (Number of Patients)		6	
Litter Rack Seat Belts		2	
Blood Bottle Hangers		6	
Aft Bulkhead Tiedown Fittings		16	
Cargo Restraint Device		1	
Parachute Anchor Line Cable Kit		1	FY-64 UH-1D
Section D - Aft Fuselage Compartment			
AN/ARN-30	OMNI Range Receiver	1	
AN/APX-4	Transponder Set	1	
AN/ARC-102	HF Radio Set	1	
J-2	Gyro Compass	1	FY-63 UH-1D
Luggage Compartment Net		1	
100,000 BTU Heater Kit		1	
Internal Fuel Tank Kit (300 Gallon) (Two 150 Gallon Tanks)		1	
Blade Anti-Icing Kit		1	
Section E - Exterior			
Pitot Tube All Weather Cover		1	
Rear View Mirror		1	
Engine Air Inlet All Weather Cover		1	
Hard Point Fittings		4	
External Stores Kit		1	XM-6E3 FY64 UH-1D
External Stores Kit		1	XM-3 FY64 UH-1D
External Stores Kit		1	XM-153MG FY63 UH-1D
Engine Exhaust All Weather Cover		1	
Main Rotor Blade Tiedown Rig		1	
Tail Rotor Blade Tiedown Rig		1	

205070-42-2B

Figure C-1. Inventory items list component diagram (Sheet 2 of 2)

APPENDIX D

WEIGHT AND BALANCE

D-1. WEIGHT AND BALANCE.

D-2. GENERAL INFORMATION.

**Note**

For general weight and balance information, refer to TM 55-405-9, Army Aviation

Maintenance Engineering Manual, Weight and Balance. Appendix B, Maintenance Allocation Chart should be consulted for responsibility of weighing and balancing of the aircraft.

## APPENDIX E

## ILLUSTRATED FIELD MANUFACTURE ITEMS LIST

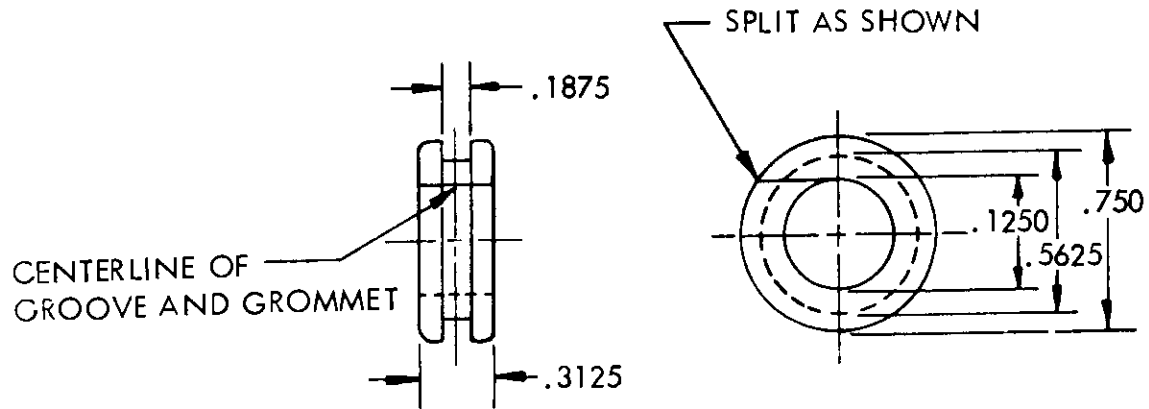
## E-1. INTRODUCTION.

E-2. This appendix includes complete instructions, including bills of material, for field manufacture of all items listed in TM 55-1520-210-20P, Organizational Maintenance Repair Parts and Special Tools Lists, bearing MO Source Code.

E-3. The part number index lists all items in part number order with a cross-reference to the figure in which the item appears. All materials necessary for manufacture of an item are listed, by Federal stock number, in the bill of material for the item.

## PART NUMBER INDEX

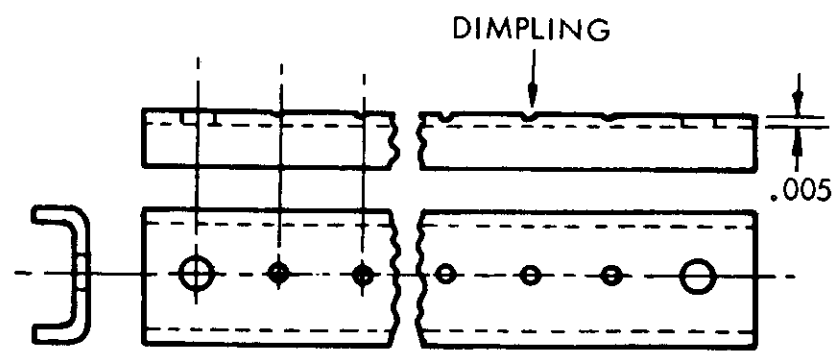
Part Number	Figure Number	Part Number	Figure Number
AN931-5S9	E-1	MS27212-1-15	E-3
MS18029-1S2	E-2	MS27212-1-18	E-3
MS18029-1S6	E-2	25C10-1A3	E-4
MS18029-1S7	E-2	25C10-1A4	E-4
MS18029-1S9	E-2	25C10-1A4-5	E-4
MS18029-1S10	E-2	25C10-1A6	E-4
MS18029-1S11	E-2	25C10-1A7-00	E-4
MS18029-1S12	E-2	25C10-1A25	E-4
MS18029-1S15	E-2	25C10-2-3	E-4
MS18029-1S18	E-2	25C10-2-4	E-4
MS27212-1-1	E-3	204-075-152-3	E-5
MS27212-1-2	E-3	205-075-137-1	E-7
MS27212-1-4	E-3	397-1	E-6
MS27212-1-5	E-3	397-2	E-6
MS27212-1-7	E-3	397-4	E-7
MS27212-1-9	E-3	397-12	E-6
MS27212-1-10	E-3	397-15	E-6
MS27212-1-11	E-3	397-18	E-6
MS27212-1-12	E-3		



Part Number AN 931-5S9 GROMMET, Rubber  
Fabricate from: FSN 5325-543-3364  
Material: Grommet, Rubber, Synthetic

Figure E-1.



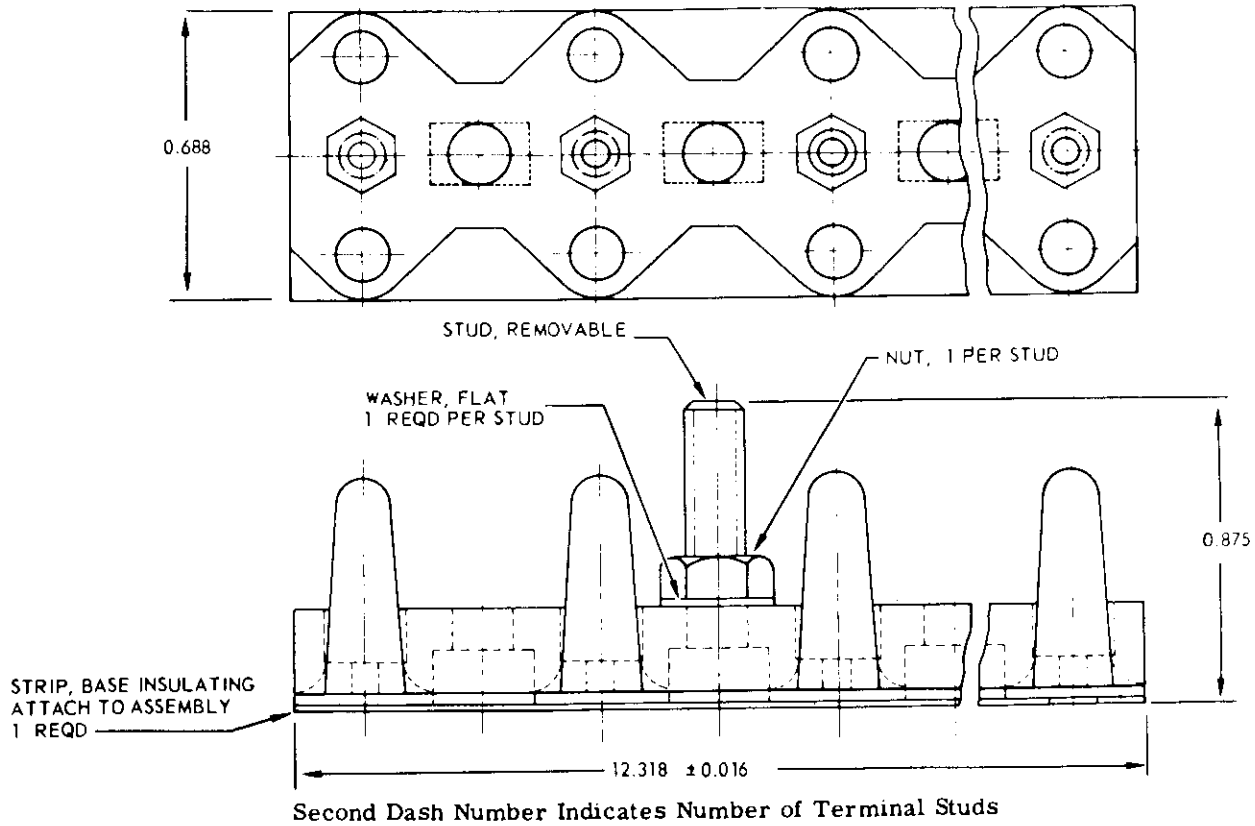


NOTES:

1. - IS USE ONE NUT ASSEMBLY ONLY. ALL OTHER ASSEMBLIES USES TWO NUT ASSYS.
2. LAST DASH NUMBER INDICATES NUMBER OF STUDS TO BE COVERED.
3. DIMPLING IS TO ENSURE CORRECT POSITIONING OF HOLE(S) FOR THE NUT ASSEMBLY

Part Numbers MS18029-1S2, MS18029-1S4, MS18029-1S6, COVER, Terminal Board  
 MS18029-1S7, MS18029-1S9, MS18029-1S10,  
 MS18029-1S11, MS18029-1S12, MS18029-1S15,  
 MS18029-1S18.  
 Fabricate from FSN 5940-082-4642  
 FSN 5940-907-5939

Figure E-2.

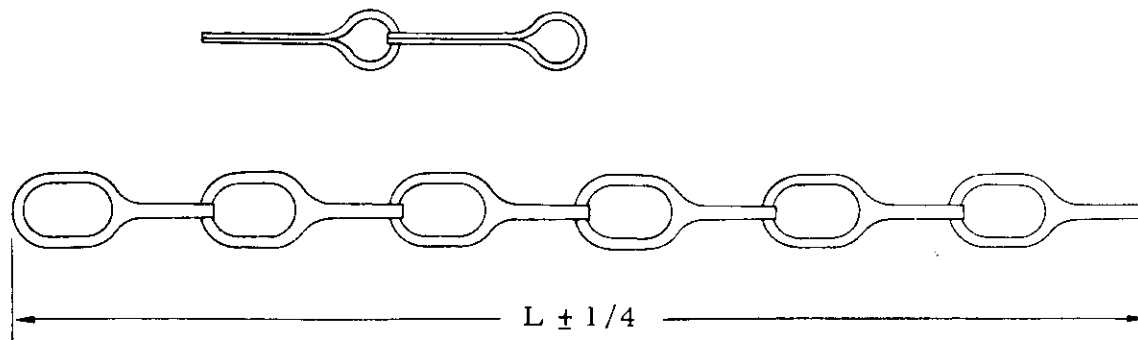


- |              |             |                |
|--------------|-------------|----------------|
| Part Numbers | MS27212-1-1 | TERMINAL BLOCK |
|              | MS27212-1-2 | MS27212-1-10   |
|              | MS27212-1-4 | MS27212-1-11   |
|              | MS27212-1-5 | MS27212-1-12   |
|              | MS27212-1-7 | MS27212-1-15   |
|              | MS27212-1-9 | MS27212-1-18   |

Fabricate from FSN 5940-950-1610

Material: Terminal Board, Plastic, Laminated

Figure E-3.



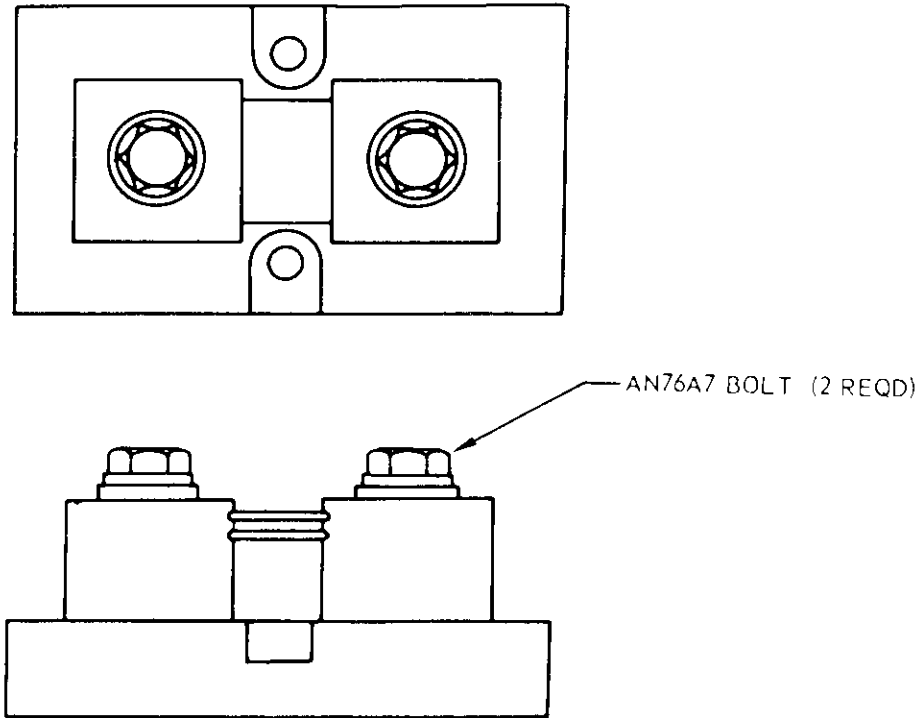
Second Dash Number Indicates Length in Inches

Part Number 25C10 CHAIN, Safety

25C10-1A3	25C10-1A6	25C10-2-3
25C10-1A4	25C10-1A7-00	25C10-2-4

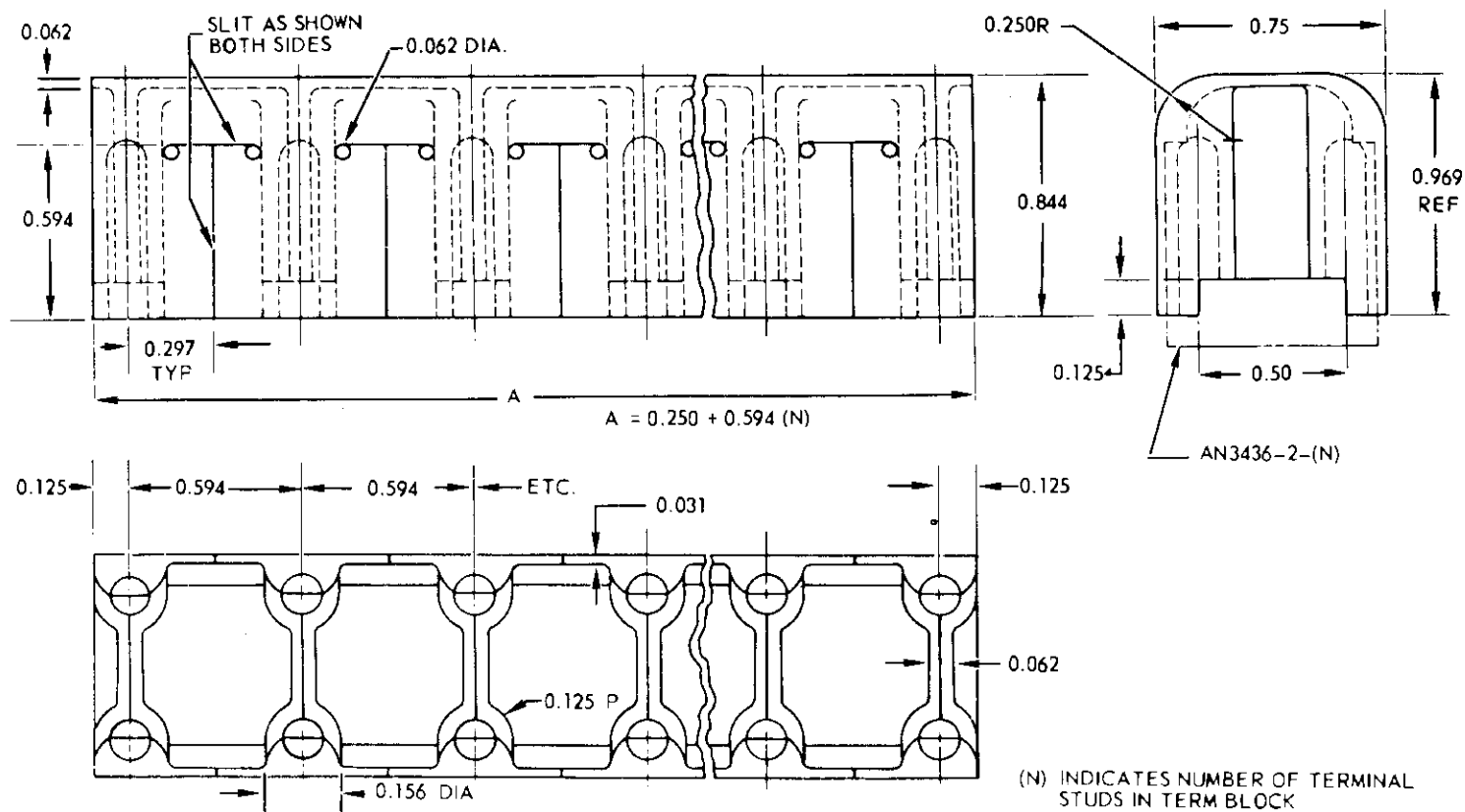
Fabricate from: FSN 4010-554-8661  
 Material: Chain, Brass 0.018 in. thk, RR-C-271  
 Type II Class 6

Figure E-4.



Part Number        204-075-152-3 SHUNT  
Fabricate from:    FSN 6625-166-1005

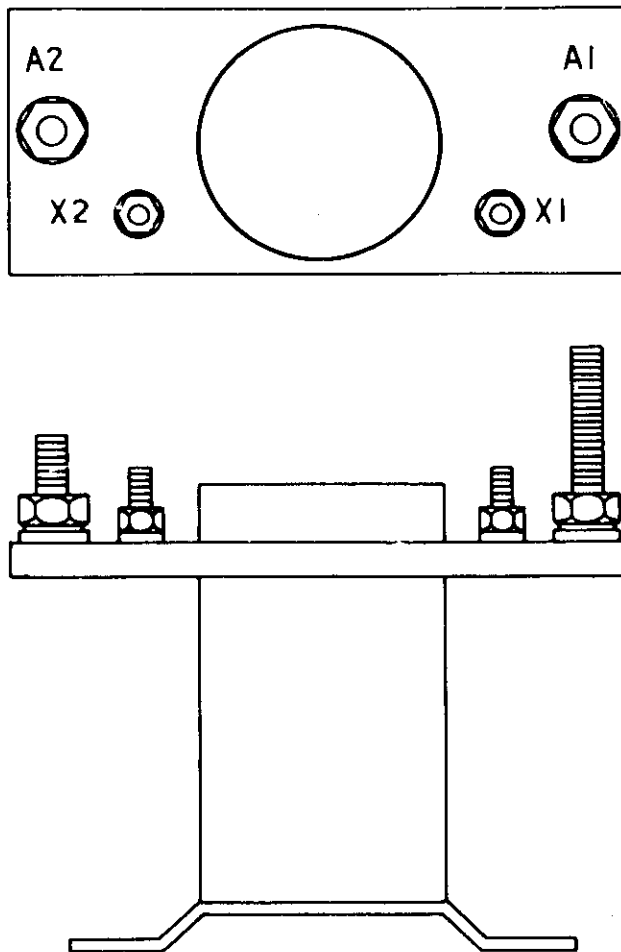
Figure E-5.



Part Number	397 COVER - Electrical Terminal Block
	397-1            397-9
	397-2            397-11
	397-4            397-12

Fabricate from: FSN 5940-642-1381  
 Material: Synthetic Rubber

Figure E-6.



Part Number 205-075-137-3, RELAY ASSEMBLY - 200 AMP, Battery  
Fabricate from: FSN 5945-660-9315

Figure E-7.

ALPHABETICAL INDEX

SUBJECT	PAGE	SUBJECT	PAGE
A			
A Appendix . . . . .	A-1	Airframe Depreservation . . . . .	16-9
AC Circuit Breakers . . . . .	12-29	Airframe Flyable Storage . . . . .	16-3
AC Voltmeter . . . . .	10-16	Airframe Intermediate Storage . . . . .	16-5
Access Doors - Electrical . . . . .	4-1	Airframe Short Term Storage . . . . .	16-3
Access Doors - Equipment . . . . .	4-1	Airspeed Indicator . . . . .	10-3
Accessory Drive Gearbox . . . . .	5-40	Align - Definition of . . . . .	B-1
Accident Engine Preservation . . . . .	16-9	Alighting Gear . . . . .	4-45
Activation and Depreservation . . . . .	16-9	Alighting Gear and Aircraft . . . . .	1-2, 4-1
Activation - Engine . . . . .	16-10	Alignment - Main Drive Shaft . . . . .	7-23
Activation - Helicopter . . . . .	16-9	All Weather Covers . . . . .	1-12
Actuator - Bleed . . . . .	5-28	Allocation Chart - Maintenance . . . . .	1-2, B-1
Actuator Bracket - Rocket . . . . .	14-13	Alternate Fuel - Recording . . . . .	1-15
Adapter and Mount - Machine Gun . . . . .	14-2	Altimeter . . . . .	10-2
Adapter - Rocket . . . . .	14-13	Ammunition Feed Group - Machine Gun . . . . .	14-5
Adjust - Definition of . . . . .	B-1	AN/ASN-43 Gyro Magnetic Compass . . . . .	10-8
Adjustable Link - Rocket . . . . .	14-13	Anti-Collision Light . . . . .	12-40
Adjustable Windows . . . . .	4-19	Anti-Icing Air Valve . . . . .	5-60
Adjuster - Tail Rotor Pedal . . . . .	9-16	Anti-Icing - Engine . . . . .	5-58
Adjustment - Flight Idle . . . . .	5-144	Anti-Icing System . . . . .	11-16
Adjustment - Fuel Control . . . . .	5-123	Appendix A . . . . .	A-1
Adjustment - Fuel Flow . . . . .	5-127	Appendix B . . . . .	B-1
Adjustment - Fuel Trim . . . . .	5-127	Appendix C . . . . .	C-1
Adjustment - Gas Producer . . . . .	5-125	Appendix D . . . . .	D-1
Adjustment - Overspeed Governor . . . . .	5-135	Appendix E . . . . .	E-1
Adjustment - Power Check . . . . .	5-127	Armament . . . . .	1-2, 14-1
Adjustment - Power Lever . . . . .	5-144	Armament Control Panel . . . . .	14-7
Adjustment - Power Turbine Control . . . . .	5-140		14-14
Adjustment - Pressure Regulator Valve . . . . .	5-126	Armament Junction Box . . . . .	14-15
Aid Kits - First . . . . .	4-26	Armament Sighting Station . . . . .	14-7
Air Blower . . . . .	11-13	Armored Seats . . . . .	4-12
Air Blower - Ventilating . . . . .	11-9	Attitude Indicator System . . . . .	10-5
Air Control Valve - Bleed . . . . .	11-5	Auxiliary Combustion Heat System . . . . .	11-5
Air Filters - Engine . . . . .	4-11	Auxiliary Exhaust Heater . . . . .	11-13
Air Heat - Bleed . . . . .	11-1	Auxiliary Fuel Provisions . . . . .	5-85
Air Heat Distribution Valve - Bleed . . . . .	11-5	Auxiliary Fuel Pump . . . . .	11-21
Air Induction System . . . . .	5-50	Auxiliary Fuel System . . . . .	1-17
	5-53		11-21
Air Inlet Filters . . . . .	5-51	Auxiliary Fuel System Control Panel . . . . .	15-4
	5-53	Auxiliary Fuel System - External . . . . .	15-1
Air Intake - Engine . . . . .	5-51	Auxiliary Power Unit . . . . .	11-21
Air Mixing Valve - Bleed . . . . .	11-5	Avionics . . . . .	1-2
Air Mixing Valve - Hot . . . . .	11-13		14-1
Air Pressure Switches - Heater . . . . .	11-9	Avionics Intermediate Storage . . . . .	16-8
Air Scoops . . . . .	11-12	Avionics Short Term Storage . . . . .	16-5
Air Valve - Anti-Icing . . . . .	5-60	B	
Airbleed System - Interstage . . . . .	5-25	B Appendix . . . . .	B-1
Aircraft and Alighting Gear . . . . .	1-2	Baffles - Induction . . . . .	5-51
Aircraft Description . . . . .	1-4	Balance and Weight . . . . .	1-2, D-1
Aircraft - General . . . . .	1-4	Band - Interstage Bleed . . . . .	5-33
Aircraft Inventory Master Guide . . . . .	1-2	Bar - Stabilizer . . . . .	8-26
	C-1	Bar Dampers - Stabilizer . . . . .	1-18
Aircraft Retrieval of Downed . . . . .	1-20		8-28
Aircraft Storage . . . . .	1-2	Battery Depreservation . . . . .	16-10
	16-1	Battery Intermediate Storage . . . . .	16-8
Airframe and Alighting Gear . . . . .	4-1	Battery Relay . . . . .	12-17

SUBJECT	PAGE	SUBJECT	PAGE
Battery - Servicing . . . . .	1-20	Capacity - Engine Oil . . . . .	1-18
Battery Short Term Storage . . . . .	16-5	Capacity - Transmission Oil . . . . .	1-18
Battery System . . . . .	12-14	Cargo Doors . . . . .	4-8
Bearing - Heading Indicator . . . . .	10-7	Cargo Door Latch . . . . .	4-8
Bellmouth . . . . .	5-51	Cargo Door Windows . . . . .	4-20
Belts - Crew Seat . . . . .	4-16	Cargo Release . . . . .	4-23
Belts - Troop Seat . . . . .	4-16	Cargo Suspension - External . . . . .	4-21
Blackout Curtains . . . . .	4-20	Cargo Tie-down . . . . .	4-21
Blade - Main Rotor . . . . .	8-18	Case - Map and Data . . . . .	4-25
Blade Sweeping - Main Rotor . . . . .	8-12	Categories of Storage . . . . .	16-1
Blade - Tail Rotor . . . . .	8-37	Caution Lights . . . . .	12-33
	8-43	Cell Fittings - Fuel . . . . .	5-64
Blade - Windshield Wiper . . . . .	11-20	Chart - Connector Replacement . . . . .	13-1
Blankets - Soundproofing . . . . .	4-20	Chart - Lubrication . . . . .	2-1
Bleed Actuator . . . . .	5-28	Chart - Maintenance Allocation . . . . .	1-2
Bleed Air Control Valve . . . . .	11-5		B-1
Bleed Air Heat . . . . .	11-1	Chamber Drain Valve - Combustion . . . . .	5-50
Bleed Air Heat Distribution Valve . . . . .	11-5	Changing Oil - Engine . . . . .	1-18
Bleed Air Mixing Valve . . . . .	11-5	Check Valve - Fuel . . . . .	5-75
Bleed Band - Interstage . . . . .	5-33	Check Valve Manifold - Fuel . . . . .	5-69
Bleeding Hydraulic System . . . . .	6-9	Chip Detector . . . . .	5-96
	6-12		7-34
Blood Bottle Hooks . . . . .	4-26	Circuit Breakers , AC . . . . .	12-29
Blower - Air . . . . .	11-13	Circuit Breakers, DC . . . . .	12-7
Blower - Combustion Heater . . . . .	11-9	Cleaning . . . . .	1-20
Blower - Turbo . . . . .	5-95	Cleaning - Engine . . . . .	5-10
Blower - Ventilating Air . . . . .	11-9	Clock . . . . .	10-7
Bolts - Mast Control System . . . . .	3-40	Clutches . . . . .	7-26
Boom - Rescue Hoist . . . . .	4-40	Coil - Ignition . . . . .	5-106
Boom - Tail . . . . .	4-41	Collective Hydraulic Cylinder . . . . .	6-18
Boost Pump - Fuel . . . . .	5-73	Collective Control Jackshaft . . . . .	9-3
Bottle Hooks - Blood . . . . .	4-26	Collective Control Stick . . . . .	9-3
Box - Accessory Drive Gear . . . . .	5-40	Collective Pitch Control Linkage . . . . .	9-10
Box - Armament Junction . . . . .	14-15	Collective Pitch Control System . . . . .	9-1
Box Contamination - Gear . . . . .	7-4	Collective Sleeve . . . . .	8-30
Box - Intermediate Gear . . . . .	1-18	Combustion Blower - Heater . . . . .	11-9
	7-40	Combustion Chamber Drain Valve . . . . .	5-50
Box - Rescue Hoist Control . . . . .	4-38	Combustion Heater . . . . .	1-3
Box - Tail Rotor Gear . . . . .	1-18	Combustion Heat System - Auxiliary . . . . .	11-5
	7-42	Compass, AN/ASN-43 Gyro Magnetic . . . . .	10-8
Bracket - Rocket Actuator . . . . .	14-13	Compass, Radio . . . . .	10-7
Brake - Magnetic . . . . .	9-15	Compass, Standby . . . . .	10-8
Bus Control Relay . . . . .	12-12	Components, Miscellaneous Electrical . . . . .	12-6
		Compounds - Sealing . . . . .	5-8
C		Compressor Cleaning - Engine . . . . .	5-11
C Appendix . . . . .	C-1	Connector Replacement Chart . . . . .	13-1
Cabin . . . . .	4-1	Contamination - Engine Lubrication . . . . .	5-92
Cabin Heating . . . . .	11-1	Contamination - Gearbox . . . . .	7-4
Cabin Inspection Plates . . . . .	4-7	Contamination of Oil . . . . .	1-3
Cabin Lower Windows . . . . .	4-19	Contents - Manual . . . . .	1-1
Cabin Nose Door . . . . .	4-3	Control Adjustment - Fuel . . . . .	5-123
Cabin Roof Windows . . . . .	4-19	Control Adjustment - Power Turbine . . . . .	5-140
Cabin Thermostat . . . . .	11-12	Control Box - Rescue Hoist . . . . .	4-38
Cables - Tail Rotor Control . . . . .	9-20	Control Cables - Tail Rotor . . . . .	9-20
Calibrate - Definition of . . . . .	B-1	Control Filter - Fuel . . . . .	5-130
Cambox - Power Controls . . . . .	5-136	Control - Fuel . . . . .	5-112
Capacities - Fuel . . . . .	1-15	Control Jackshaft - Collective . . . . .	9-3
Capacities - Hydraulic . . . . .	1-19	Control Linkage - Collective Pitch . . . . .	9-10



SUBJECT	PAGE	SUBJECT	PAGE
Control Linkage - Cyclic . . . . .	9-12		
Control Linkage - Power . . . . .	5-142		
Control Overspeed Governor - Fuel . . . . .	5-133		
Control Panels . . . . .	12-6		
Control Panel - Armament . . . . .	14-7		
Control Panel Assembly - Armament . . . . .	14-14		
Control Panel - Auxiliary Fuel System . . . . .	15-4		
Control Pedals - Tail Rotor . . . . .	9-16		
Control Quadrant - Tail Rotor . . . . .	9-17		
Control Quill - Tail Rotor Pitch . . . . .	9-17		
Control - Rescue Hoist Overload . . . . .	4-40		
Control - Rescue Hoist Pendant . . . . .	4-40		
Control Solenoid Valve - Fuel . . . . .	5-117		
Control Stick - Collective . . . . .	9-3		
Control Sticks - Cyclic . . . . .	9-11		
Control Strainers - Fuel . . . . .	5-130		
Control System Bolts - Mast . . . . .	3-40		
Control System - Collective Pitch . . . . .	9-1		
Control System - Cyclic . . . . .	9-1		
Control Tubes . . . . .	8-36		
Control Valve - Bleed Air . . . . .	11-5		
Control Valve - Temperature . . . . .	11-13		
Controls - Flight . . . . .	1-2, 9-1		
Controls - Power . . . . .	5-142		
Controls and Rotor Depreservation . . . . .	16-10		
Controls and Rotor Intermediate Storage . . . . .	16-8		
Controls and Rotor Short Term Storage . . . . .	16-5		
Controls - Synchronized Elevator . . . . .	9-3		
Controls - Tail Rotor . . . . .	9-22		
Consumable Materials . . . . .	9-1		
Converter - Motor - Windshield Wiper . . . . .	1-20		
Cooler - Engine Oil . . . . .	11-20		
Cooler - Transmission Oil . . . . .	5-94		
Cooling System . . . . .	7-35		
Cooler Thermal Valve - Oil . . . . .	5-109		
Copilot and Pilot Doors . . . . .	5-95		
Copilot's Seat . . . . .	4-1		
Couplings - Drive Shaft . . . . .	4-12		
Course Indicator . . . . .	7-10		
Covers - All Weather . . . . .	10-7		
Covers - Crew Seat . . . . .	1-12		
Covers - Drive Shaft . . . . .	4-14		
Cowling - Engine . . . . .	4-41		
Cowling - Transmission . . . . .	4-10		
Crank Assembly - Rocket . . . . .	4-11		
Crew Seat Belts . . . . .	14-13		
Crew Seat Covers . . . . .	4-16		
Cross Fitting - Fuel . . . . .	4-14		
Curtains - Blackout . . . . .	5-75		
Cyclic Control Linkage . . . . .	4-20		
Cyclic Control Sticks . . . . .	9-12		
Cyclic Control System . . . . .	9-11		
Cyclic Hydraulic Cylinder . . . . .	9-1		
Cylinder - Collective Hydraulic . . . . .	6-23		
Cylinder - Cyclic Hydraulic . . . . .	6-18		
Cylinder Servo Valve - Power . . . . .	6-23		
Cylinder - Tail Rotor Hydraulic . . . . .	6-23		
	6-27		
		D	
		D Appendix . . . . .	D-1
		Damaged Engine Preservation . . . . .	16-9
		Dampers - Friction . . . . .	7-27
		Dampers - Stabilizer Bar . . . . .	1-18
			8-28
		Data Case . . . . .	4-25
		Data - Wiring . . . . .	13-1
		DC Circuit Breakers . . . . .	12-7
		DC Starter System . . . . .	12-17
		DC Voltmeter . . . . .	10-16
		Definitions . . . . .	1-1
		Defrosting Systems . . . . .	11-1
			11-20
		Defueling . . . . .	1-15
		Deicing System . . . . .	11-16
		Demolition . . . . .	16-11
		Depreservation and Activation . . . . .	16-9
		Depreservation - Airframe . . . . .	16-9
		Depreservation - Battery . . . . .	16-10
		Depreservation - Fuel Cells . . . . .	16-9
		Depreservation - Landing Gear . . . . .	16-10
		Depreservation - Power Train . . . . .	16-10
		Depreservation - Rotor and Controls . . . . .	16-10
		Description of Aircraft . . . . .	1-4
		Description - Engine . . . . .	5-3
		Destruction by Explosives . . . . .	16-11
		Destruction by Fire . . . . .	16-11
		Destruction by Mechanical Means . . . . .	16-11
		Detector - Engine Chip . . . . .	5-96
		Detector - Transmission Chip . . . . .	7-34
		Detector - Ice . . . . .	5-60
		Detector System - Fire . . . . .	11-16
		Diagrams . . . . .	13-29
		Diagrams Description . . . . .	1-2
		Diagrams - Wiring . . . . .	1-2
		Distribution - Engine Oil . . . . .	5-87
		Distribution Valve - Bleed Air Heat . . . . .	11-5
		Divider - Fuel Flow . . . . .	5-83
		Door - Cabin Nose . . . . .	4-3
		Doors - Cargo . . . . .	4-8
		Doors - Electrical Access . . . . .	4-1
		Doors - Equipment Access . . . . .	4-1
		Door - Hinged Panel . . . . .	4-7
		Door Latch - Cargo . . . . .	4-8
		Door Latch - Pilot and Copilot . . . . .	4-3
		Doors - Pilot and Copilot . . . . .	4-1
		Door Windows - Cargo . . . . .	4-20
		Door Windows - Upper . . . . .	4-19
		Downed Aircraft - Retrieval of . . . . .	1-20
		Draining - Engine Oil . . . . .	1-18
		Drain Valves . . . . .	1-15
		Drain Valve - Combustion Chamber . . . . .	5-50
		Drive Gearbox - Accessory . . . . .	5-40
		Drive - Oil Pump . . . . .	5-41
		Drive - Overspeed Governor . . . . .	5-47
		Drive Quill - Generator . . . . .	7-36

SUBJECT	PAGE	SUBJECT	PAGE
Drive Quill - Hydraulic . . . . .	7-36	Engine Orientation . . . . .	5-1
Drive Quill - Input . . . . .	7-36	Engine Over Limits . . . . .	5-20
Drive Quill - Tachometer . . . . .	7-36	Engine Painting . . . . .	5-12
Drive Quill - Tail Rotor . . . . .	7-36	Engine Permanent Storage . . . . .	16-9
Drive Shaft Alignment - Main . . . . .	7-23	Engine Preservation - Accident . . . . .	16-9
Drive Shaft Couplings . . . . .	7-10	Engine Preservation - Damage . . . . .	16-9
Drive Shaft Covers . . . . .	4-41	Engine Principles of Operation . . . . .	5-6
Drive Shaft Hangers . . . . .	7-39	Engine Repair - Minor . . . . .	5-10
Drive Shaft - Main . . . . .	7-7	Engine Short Term Storage . . . . .	16-4
Drive Shaft - Tail Rotor . . . . .	7-37	Engine Troubleshooting . . . . .	5-13
Drive - Tachometer . . . . .	5-47	Engine Use . . . . .	5-1
Dual Tachometer System . . . . .	10-9	Equipment - Ground Support . . . . .	1-2
Ducts - Heater . . . . .	11-15	Equipment List . . . . .	13-1
Dust Separator - Sand and . . . . .	5-53	Equipment - Special . . . . .	1-20
Dusty Conditions . . . . .	1-3	Exchanger - Heat . . . . .	11-13
E			
E Appendix . . . . .	E-1	Exhaust Gas Temperature Indicator . . . . .	10-14
Electrical Load Data . . . . .	1-3	Exhaust Heater - Auxiliary . . . . .	11-13
Electrical Operational Checks . . . . .	12-43	Exhaust System . . . . .	5-61
Electrical Systems . . . . .	1-2	Exhaust Tailpipe . . . . .	5-61
Elevator Controls - Synchronized . . . . .	9-3	Exhaust Thermocouple . . . . .	5-61
	9-22	Explosives - Destruction by . . . . .	16-11
Elevator - Synchronized . . . . .	4-42	Exterior Lights . . . . .	12-38
Emergency Fuel - Recording . . . . .	1-15	External Auxiliary Fuel System . . . . .	15-1
Engine Activation . . . . .	16-10	External Cargo Suspension . . . . .	4-21
Engine Air Filter . . . . .	4-11	External Power . . . . .	1-12
Engine Air Intake . . . . .	5-51	External Power Receptacle . . . . .	12-8
Engine - Anti-Icing . . . . .	5-58	External Power Relay . . . . .	12-8
Engine Cleaning . . . . .	5-10	External Power Requirements . . . . .	1-3
Engine Compressor Cleaning . . . . .	5-11	External Power System . . . . .	12-7
Engine Cowling . . . . .	4-10	External Pylon Assembly . . . . .	15-2
Engine Description . . . . .	5-3	External Pylon Support . . . . .	15-4
Engine Flyable Storage . . . . .	16-3	External Stores - Non-Armament . . . . .	1-2
Engine Inspection . . . . .	5-10		15-1
Engine Intake Fairing . . . . .	4-11	External Stores Support . . . . .	15-4
Engine Intermediate Storage . . . . .	16-6	Extinguisher - Fire . . . . .	4-26
Engine Lubrication Contamination . . . . .	5-92	Extinguisher System - Fire . . . . .	11-19
Engine Maintenance Precautions . . . . .	5-7	Extreme Low Frequency Vibration . . . . .	8-1
Engine Models . . . . .	5-1	F	
Engine Model Differences . . . . .	5-1	Fairing - Engine Intake . . . . .	4-11
Engine Mounts . . . . .	5-20	Fairing - Tailpipe . . . . .	4-11
Engine Oil - Capacity . . . . .	1-18	Fairing - Vertical Fin . . . . .	4-44
Engine Oil Cooler . . . . .	5-94	Field Manufacture Items . . . . .	1-2, E-1
Engine Oil Distribution . . . . .	5-87	Filters - Air Inlet . . . . .	5-51
Engine Oil - Draining . . . . .	1-18		5-53
Engine Oil Filter . . . . .	5-101	Filters - Engine Air . . . . .	4-11
Engine Oil Pressure Indicator System . . . . .	10-11	Filter - Engine Oil . . . . .	5-101
Engine Oil Pressure Transmitter . . . . .	10-12	Filter - Fuel Control . . . . .	5-130
Engine Oil Pump . . . . .	5-97	Filter - Hydraulic . . . . .	6-14
Engine Oil Scavenge . . . . .	5-87	Filter - Main Fuel . . . . .	5-70
Engine Oil Strainers . . . . .	5-96	Filter - Transmission Oil . . . . .	7-27
Engine Oil System . . . . .	5-87		7-29
Engine Oil System Maintenance . . . . .	5-89	Fin Fairing - Vertical . . . . .	4-44
Engine Oil System - Servicing . . . . .	1-17	First Aid Kits . . . . .	4-26
Engine Oil Tank . . . . .	5-93	Fire - Destruction by . . . . .	16-11
Engine Oil Temperature Indicator . . . . .	10-13	Fire Detector System . . . . .	11-16
Engine Oil Use . . . . .	5-89	Fire Extinguisher . . . . .	4-26
		Fire Extinguisher System . . . . .	11-19

SUBJECT	PAGE	SUBJECT	PAGE
Firing Relay - Gun . . . . .	14-7	Fuel Strainer - Main . . . . .	5-68
Fittings - Fuel Cell . . . . .	5-64	Fuel System . . . . .	5-64
Fitting - Fuel Cross . . . . .	5-75	Fuel System - Auxiliary . . . . .	1-17
Flasher Navigation Lights . . . . .	12-41		11-21
Flight Controls . . . . .	1-2, 9-1	Fuel System Control Panel - Auxiliary. . .	15-4
Flight Idle Adjustment . . . . .	5-144	Fuel System - External Auxiliary . . . . .	15-1
Flight Inspections - Test . . . . .	3-24	Fuel System Flyable Storage . . . . .	16-3
Flow Adjustment - Fuel . . . . .	5-127	Fuel System Intermediate Storage. . . . .	16-8
Flow Divider - Fuel . . . . .	5-83	Fuel System Maintenance . . . . .	5-64
Flow Switch - Fuel . . . . .	5-75	Fuel System Short Term Storage . . . . .	16-4
Flushing Hydraulic System . . . . .	6-10	Fuel System - 20 Minute . . . . .	5-76
Flyable Storage . . . . .	16-1	Fuel Tank Sump . . . . .	5-71
Flyable Storage - Airframe . . . . .	16-3	Fuel Train - Heater . . . . .	11-11
Flyable Storage - Engine . . . . .	16-3	Fuel Trim Adjustment . . . . .	5-127
Flyable Storage - Fuel System . . . . .	16-3	Fuselage . . . . .	4-1
Flyable Storage Preparation . . . . .	16-2		
Force Gradient Assembly . . . . .	9-14	G	
Force Trim System . . . . .	12-25		
Free Air Temperature Gage . . . . .	10-17	Gage, Free Air Temperature . . . . .	10-17
Frequency Vibration - Extreme Low . . .	8-1	Gage - Transmission Oil Sight . . . . .	7-34
Frequency Vibration - High . . . . .	8-5	Gas Producer Adjustment . . . . .	5-125
Frequency Vibration - Low . . . . .	8-2	Gas Producer Group . . . . .	5-3
Frequency Vibration - Medium . . . . .	8-5	Gas Producer Speed . . . . .	5-125
Friction Dampers . . . . .	7-27	Gas Producer Tachometer Generator . . .	10-11
Fuel Boost and Fuel Valve System -		Gas Producer Tachometer System . . . . .	10-10
Electrical . . . . .	12-26	Gear - Alighting . . . . .	4-45
Fuel Boost Pump . . . . .	5-73	Gear Box - Accessory Drive . . . . .	5-40
Fuel Capacities . . . . .	1-15	Gear Box Contamination . . . . .	7-4
Fuel Cells Depreservation . . . . .	16-9	Gear Box - Intermediate . . . . .	1-18
Fuel Cell Fittings . . . . .	5-64		7-40
Fuel Check Valve . . . . .	5-75	Gear Box - Tail Rotor . . . . .	1-18
Fuel Check Valve Manifold . . . . .	5-69		7-42
Fuel Control . . . . .	5-112	Gear - Ground Handling . . . . .	1-12
Fuel Control Adjustment . . . . .	5-123		4-46
Fuel Control Filter . . . . .	5-130	Gear - Landing . . . . .	4-45
Fuel Control Overspeed Governor . . . . .	5-133	Gear - Landing Short Term Storage . . . . .	16-5
Fuel Control Solenoid Valve . . . . .	5-117	General Information . . . . .	1-1
Fuel Control Strainers . . . . .	5-130	Generator and Bus System . . . . .	12-8
Fuel Cross Fitting . . . . .	5-75	Generator Drive Quill . . . . .	7-36
Fuel Filter - Main . . . . .	5-70	Generator Field Control Relay . . . . .	12-13
Fuel Flow Adjustment . . . . .	5-127	Generator - Gas Producer Tachometer . .	10-11
Fuel Flow Divider . . . . .	5-83	Generator - Main . . . . .	12-12
Fuel Flow Switch . . . . .	5-75	Generator - Power Turbine Tachometer. .	10-10
Fuel Igniter . . . . .	5-80	Generator - Rotor Tachometer . . . . .	10-10
Fuel Limitations . . . . .	1-3	Generator - Smoke XM52 . . . . .	14-15
Fuel Manifolds . . . . .	5-76	Generator - Starter . . . . .	5-109
Fuel Manifold - Main . . . . .	5-80	Governor Adjustment - Overspeed . . . . .	5-135
Fuel Pressure Indicator . . . . .	10-13	Governor Control System . . . . .	12-27
Fuel Provisions - Auxiliary . . . . .	5-85	Governor Drive - Overspeed . . . . .	5-47
Fuel Pump - Auxiliary . . . . .	11-21	Governor - Fuel Control Overspeed . . . .	5-133
Fuel Quantity Indicator . . . . .	10-14	Governor - Overspeed . . . . .	5-113
Fuel - Recording Alternate or		Governor - Power Turbine . . . . .	5-136
Emergency . . . . .	1-15	Gradient Assembly - Force . . . . .	9-14
Fuel Regulator Preservation . . . . .	16-8	Ground Check - Main Rotor . . . . .	8-7
Fuel Servicing . . . . .	1-15	Ground Handling . . . . .	1-4
Fuel Shutoff Valve . . . . .	5-71	Ground Handling Gear . . . . .	1-12
Fuel Solenoid Valve - Starting . . . . .	5-69		4-46
Fuel Strainer . . . . .	5-76	Ground Handling Gear Pump . . . . .	1-19

SUBJECT	PAGE	SUBJECT	PAGE
Ground Support Equipment . . . . .	1-2	Hydraulic Cylinder - Tail Rotor . . . . .	6-27
Guide - Aircraft Inventory Master . . . . .	1-2	Hydraulic Drive Quill . . . . .	7-36
	C-1	Hydraulic Filter . . . . .	6-14
Guide Vanes - Variable Inlet . . . . .	5-20	Hydraulic Intermediate Storage . . . . .	16-8
Gun Ammunition Feed Group - Machine . . . . .	14-5	Hydraulic and Pneumatic Systems . . . . .	6-1
Gun Firing Relay . . . . .	14-7	Hydraulic Pump . . . . .	6-14
Gun Installation - Machine . . . . .	14-1	Hydraulic Reservoir . . . . .	1-19
Gun - Machine . . . . .	14-1		6-15
Gun Mount and Adapter - Machine . . . . .	14-2	Hydraulic Short Term Storage . . . . .	16-5
Gunnery Equipment . . . . .	14-1	Hydraulic Systems . . . . .	1-2
Gyro - AN/ASN-43 Magnetic Compass . . . . .	10-8	Hydraulic System Bleeding . . . . .	6-9
			6-12
H			
Handling Gear - Ground . . . . .	1-12	Hydraulic System Flushing . . . . .	6-10
	4-46	Hydraulic System Operation . . . . .	6-1
Handling - Ground . . . . .	1-4	Hydraulic System Operational Check . . . . .	6-12
Hangers - Drive Shaft . . . . .	7-39	Hydraulic System Pressure Test . . . . .	6-13
Harness - Shoulder . . . . .	4-16	Hydraulic System Testing . . . . .	6-9
Heat - Bleed Air . . . . .	11-1		6-11
Heat Distribution Valve - Bleed Air . . . . .	11-5	I	
Heat Exchanger . . . . .	11-13	Ice Detector . . . . .	5-60
Heat System - Auxiliary Combustion . . . . .	11-5	Icing - Engine Anti . . . . .	5-58
Heater Air Pressure Switches . . . . .	11-9	Identification - Metal Particle . . . . .	7-5
Heater - Auxiliary Exhaust . . . . .	11-13	Idle Stop System . . . . .	12-28
Heater - Combustion . . . . .	1-3	Igniter - Fuel . . . . .	5-80
Heater Combustion Blower . . . . .	11-9	Igniter Plugs . . . . .	5-106
Heater Ducts . . . . .	11-15	Igniter System . . . . .	12-25
Heater Fuel Train . . . . .	11-11	Ignition Coil . . . . .	5-106
Heater Ignition . . . . .	11-10	Ignition - Heater . . . . .	11-10
Heater Nozzles . . . . .	11-15	Ignition Lead . . . . .	5-106
Heater Registers . . . . .	11-15	Ignition System . . . . .	5-105
Heater Thermal Switches . . . . .	11-10	Ignition Unit . . . . .	5-106
Heating - Cabin . . . . .	11-1	Improvements - Reporting of . . . . .	1-1
Heating and Ventilating . . . . .	11-1	Indicator - Airspeed . . . . .	10-3
Helicopter Activation . . . . .	16-9	Indicator - Attitude System . . . . .	10-5
Helicopter Intermediate Storage . . . . .	16-5	Indicator - Bearing - Heading . . . . .	10-7
Helicopter Short Term Storage . . . . .	16-3	Indicator - Course . . . . .	10-7
High Frequency Vibration . . . . .	8-5	Indicator - Engine Oil Pressure System . . . . .	10-11
Hinged Panel Door . . . . .	4-7	Indicator - Engine Oil Temperature . . . . .	10-13
Hoist Boom - Rescue . . . . .	4-40	Indicator - Exhaust Gas Temperature . . . . .	10-14
Hoist Control Box - Rescue . . . . .	4-38	Indicator - Fuel Pressure . . . . .	10-13
Hoist Hook - Rescue . . . . .	4-40	Indicator - Fuel Quantity . . . . .	10-14
Hoist Limit Switch - Rescue . . . . .	4-38	Indicator - Torque Pressure System . . . . .	10-12
Hoist Overload Control - Rescue . . . . .	4-40	Indicator - Transmission Oil Pressure . . . . .	10-16
Hoist Pendant Control - Rescue . . . . .	4-40	Indicator - Transmission Oil Temperature . . . . .	10-16
Hoist - Rescue . . . . .	4-33	Indicator - Turn and Slip . . . . .	10-4
Hoisting . . . . .	1-7	Indicator - Vertical Velocity . . . . .	10-6
Hooks - Blood Bottle . . . . .	4-26	Induction Baffles . . . . .	5-51
Hook - Rescue Hoist . . . . .	4-40	Induction System - Air . . . . .	5-50
Hot Air Mixing Valve . . . . .	11-13		5-53
Hub - Main Rotor . . . . .	8-12		4-16
	8-24	Inertia Reel . . . . .	4-16
Hub Servicing - Main Rotor . . . . .	1-18	Information - General . . . . .	1-1
Hub - Tail Rotor . . . . .	8-37	Inlet Filters - Air . . . . .	5-51
Hydraulic Capacities . . . . .	1-19		5-53
Hydraulic Control System . . . . .	12-24	Inlet Guide Vanes - Variable . . . . .	5-20
Hydraulic Cylinder - Collective . . . . .	6-18	Input Drive Quill . . . . .	7-36
Hydraulic Cylinder - Cyclic . . . . .	6-23	Inspection - Definition of . . . . .	B-1

SUBJECT	PAGE	SUBJECT	PAGE
Inspection - Engine	5-10	Latch - Pilot and Copilot Door	4-3
Inspection Plates - Cabin	4-7	Launcher - Rocket	14-13
Inspection Requirements	1-2, 3-1	Lead - Ignition	5-106
Inspections - Special	3-3	Leveling	1-12
Inspection of Stored Helicopter	16-1	Lever Adjustment - Power	5-144
Inspections - Test Flight	3-24	Light - Anti-Collision	12-40
Install - Definition of	B-2	Lights - Caution	12-33
Instructions - Lubrication	1-1	Lights, Exterior	12-38
Instruments	1-2, 10-1	Lights - Interior	12-31
Instruments Intermediate Storage	16-8	Lights - Landing and Search	12-38
Instrument Panel	10-1	Lights - Navigation	12-40
Instruments Short Term Storage	16-5	Lights - Sight	14-14
Intake - Engine Air	5-51	Limitations - Fuel	1-3
Intake Fairing - Engine	4-11	Limits - Engine Over	5-20
Intake Screen	5-51	Limit Switch - Rescue Hoist	4-38
Interior Lights	12-31	Line - Paratroop Static	4-29
Intermediate Gearbox	7-40	Link - Pitch Change	8-16
Intermediate Storage	16-1	Link - Rocket Adjustable	14-13
Intermediate Storage - Airframe	16-5	Linkage - Collective Pitch Control	9-10
Intermediate Storage - Avionics	16-8	Linkage - Cyclic Control	9-12
Intermediate Storage - Battery	16-8	Linkage - Power Control	5-136
Intermediate Storage - Engine	16-6		5-142
Intermediate Storage - Fuel System	16-8	List - Equipment	13-1
Intermediate Gearbox	1-18	Litter Racks	4-25
Intermediate Storage - Helicopter	16-5	Loadmeter	10-17
Intermediate Storage - Hydraulic	16-8	Load Data - Electrical	1-3
Intermediate Storage - Instruments	16-8	Low Frequency Vibration	8-2
Intermediate Storage - Landing Gear	16-8	Low Frequency Vibration - Extreme	8-1
Intermediate Storage - Power Train	16-8	Lower Windows - Cabin	4-19
Intermediate Storage - Rotor and Controls	16-8	Lubricants	5-8
Intermediate Storage Servicing	16-2	Lubrication Chart	2-1
Intermediate Storage - Utility Equipment	16-8	Lubrication Contamination - Engine	5-92
Interstage Airbleed System	5-25	Lubrication Instructions	1-1, 2-1
Interstage Bleed Band	5-33	Lubricating Oil - Use of	5-7
Introduction	1-1		
Irreversible Valves	6-26	M	
Items - Field Manufacture	E-1	Machine Gun	14-1
Inventory Master Guide - Aircraft	1-2, C-1	Machine Gun Ammunition Feed Group	14-5
Inverters	12-29	Machine Gun Installation	14-1
		Machine Gun Mount and Adapter	14-2
J		Magnetic Brake	9-15
Jacking	1-7	Magnetic Compass - AN/ASN-43 Gyro	10-8
Jackshaft - Collective Control	9-3	Magnetic Plug - Transmission	7-34
Jets - Transmission Oil	7-32	Main Drive Shaft	7-7
Junction Box - Armament	14-15	Main Drive Shaft Alignment	7-23
		Main Fuel Filter	5-70
K		Main Fuel Manifold	5-80
Kits - First Aid	4-26	Main Fuel Strainer	5-68
		Main Generator	12-12
L		Main Rotor	8-1
Landing Gear	4-45	Main Rotor Blade	8-18
Landing Gear Depreservation	16-10	Main Rotor Blade Sweeping	8-12
Landing Gear Intermediate Storage	16-8	Main Rotor Ground Check	8-7
Landing Gear Short Term Storage	16-5	Main Rotor Group	1-2
Landing Light and Search Light	12-38	Main Rotor Hub	8-12
Latch - Cargo Door	4-8	Main Rotor Hub Servicing	8-24
		Main Rotor Mast	1-18
			7-36

INDEX

TM 55-1520-210-20

SUBJECT	PAGE	SUBJECT	PAGE
Main Transmission .....	7-26	Oil Distribution - Engine .....	5-87
Maintenance Allocation Chart .....	1-2	Oil - Draining Engine .....	1-18
Maintenance Data .....	B-1	Oil - Engine Pressure Indicator System .....	10-11
Maintenance - Engine Oil System .....	1-2	Oil - Engine Pressure Transmitter .....	10-12
Maintenance - Fuel System .....	5-89	Oil - Engine Temperature Indicator .....	10-13
Maintenance Precautions - Engine .....	5-64	Oil Filter - Engine .....	5-101
Manifolds - Fuel .....	5-7	Oil Filter - Transmission .....	7-27
Manifold - Fuel Check Valve .....	5-76	Oil Jets - Transmission .....	7-29
Manifold - Main Fuel .....	5-69	Oil Manifold - Transmission .....	7-32
Manifold - Transmission Oil .....	5-80	Oil Pressure Switch .....	7-33
Manual Contents .....	7-33	Oil Pressure - Torquemeter .....	5-104
Manual Release Mechanism .....	1-1	Oil - Pressure Transmission Transmitter .....	5-99
Manual Scope .....	4-29	Oil Pressure Transmitters .....	10-16
Manufacture Items - Field .....	1-1	Oil Pump Drive .....	5-104
	1-2	Oil Pump - Engine .....	5-41
	E-1	Oil Pump - Transmission .....	5-97
Map Case .....	4-25	Oil Pump Screen - Transmission .....	7-33
Mark 8 Sight .....	14-15	Oil Sight Gage - Transmission .....	7-34
Mast Control System Bolts .....	3-40	Oil Scavenge - Engine .....	5-87
Mast - Main Rotor .....	7-36	Oil Strainers - Engine .....	5-96
Master Guide - Aircraft Inventory .....	1-2	Oil System - Engine .....	5-87
	C-1	Oil System Maintenance - Engine .....	5-89
Materials - Consumable .....	1-20	Oil System - Servicing Engine .....	1-17
Mechanism - Manual Release .....	4-29	Oil System - Transmission .....	1-18
Mechanical Means - Destruction by .....	16-11	Oil - Synthetic Base .....	7-27
Medium Frequency Vibration .....	8-5	Oil Tank - Engine .....	1-3
Metal Particle Identification .....	7-5	Oil Thermal Valve - Transmission .....	5-93
Mirror - Rear View .....	4-25	Oil - Transmission Pressure Indicator .....	7-35
Miscellaneous Electrical Components .....	12-6	Oil - Transmission Temperature Indicator .....	10-16
Mixing Valve - Bleed Air .....	11-5	Oil - Transmission Temperature Indicator .....	10-16
Mixing Valve - Hot Air .....	11-13	Oil Use - Engine .....	5-89
Model Differences - Engine .....	5-1	Oil - Use of Lubricating .....	5-7
Models - Engine .....	5-1	Oil Usage - Engine .....	1-18
Mooring .....	1-10	Operation - Engine Principles of .....	5-6
Motor - Converter - Windshield Wiper .....	11-20	Operational Checks - Electrical .....	12-43
Mount and Adapter - Machine Gun .....	14-2	Operational Check - Hydraulic System .....	6-12
Mounts - Engine .....	5-20	Orientation - Engine .....	5-1
Mounts - Transmission .....	7-27	Overhaul - Definition of .....	B-2
		Overhaul Schedule .....	3-37
N		Over Limits - Engine .....	5-20
Navigation Lights Flasher .....	12-41	Overload Control - Rescue Hoist .....	4-40
Navigation Lights .....	12-40	Overspeed Governor .....	5-113
Non-Armament - External Stores .....	1-2	Overspeed Governor Adjustment .....	5-135
	15-1	Overspeed Governor - Fuel Control .....	5-133
Non-Essential Bus Relay .....	12-13	Overspeed Governor Drive .....	5-47
Nose Door - Cabin .....	4-3	Oxygen System .....	11-16
Nozzles - Heater .....	11-15		
Nozzles - Starting .....	5-76	P	
		Paratroop Static Line .....	4-29
O		Painting - Engine .....	5-12
Oil Capacity - Engine .....	1-18	Painting - Touch-up .....	1-20
Oil Capacity - Transmission .....	1-18	Panel - Armament Control .....	14-7
Oil - Changing Engine .....	1-18		14-14
Oil - Contamination of .....	1-3	Panel - Auxiliary Fuel System Control .....	15-4
Oil Cooler - Engine .....	5-94	Panels - Control .....	12-6
Oil Cooler Thermal Valve .....	5-95	Panel Door - Hinged .....	4-7
Oil Cooler - Transmission .....	7-35	Panel - Instrument .....	10-1

SUBJECT	PAGE	SUBJECT	PAGE
Panel - Sight Light . . . . .	14-14	Pressure Test - Hydraulic System . . . . .	6-13
Parking . . . . .	1-10	Pressure - Torque Indicator System . . . . .	10-12
Particle Identification - Metal . . . . .	7-5	Pressure - Torquemeter Oil . . . . .	5-99
Pedal Adjuster - Tail Rotor . . . . .	9-16	Pressure - Torque Transmitter . . . . .	10-12
Pedals - Tail Rotor Control . . . . .	9-16	Pressure - Transmission Oil Indicator . . . . .	10-16
Pendant Control - Rescue Hoist . . . . .	4-40	Pressure - Transmission Oil Transmitter . . . . .	10-16
Permanent Storage - Engine . . . . .	16-9	Pressure Transmitters - Oil . . . . .	5-104
Photography . . . . .	1-2	Principles of Operation - Engine . . . . .	5-6
	14-1	Producer Adjustment - Gas . . . . .	5-125
	4-1	Producer Group - Gas . . . . .	5-3
Pilot and Copilot Doors . . . . .	4-12	Producer Speed - Gas . . . . .	5-125
Pilot's Seat . . . . .	8-16	Provisions - Auxiliary Fuel . . . . .	5-85
Pitch Change Link . . . . .	9-10	Pump - Auxiliary Fuel . . . . .	11-21
Pitch Control Linkage - Collective . . . . .	9-17	Pump Drive - Oil . . . . .	5-41
Pitch Control Quill - Tail Rotor . . . . .	9-1	Pump - Engine Oil . . . . .	5-97
Pitch Control System - Collective . . . . .	10-4	Pump - Fuel Boost . . . . .	5-73
Pitot System . . . . .	4-7	Pump - Ground Handling Gear . . . . .	1-19
Plates - Cabin Inspection . . . . .	4-20	Pump - Hydraulic . . . . .	6-14
Platforms - Work . . . . .	11-15	Pump Screen - Transmission Oil . . . . .	7-33
Plenum Assembly . . . . .	5-106	Pump - Torquemeter Rotary . . . . .	5-99
Plug - Igniter . . . . .	7-34	Pylon . . . . .	4-45
Plug - Transmission Magnetic . . . . .	6-1	Pylon Assembly - External . . . . .	15-2
Pneumatic and Hydraulic Systems . . . . .	1-2	Pylon Support - External . . . . .	15-4
Pneumatic Systems . . . . .	6-29		
	5-127	Q	
Power Check Adjustment . . . . .	5-142	Quadrant - Tail Rotor Control . . . . .	9-17
Power Controls . . . . .	5-136	Quill - Tail Rotor Pitch Control . . . . .	9-17
Power Controls Cambox . . . . .	5-136	Quill - Fuel Indicator . . . . .	10-14
Power Control Linkage . . . . .	5-142	Quill - Generator Drive . . . . .	7-36
	6-23	Quill - Hydraulic Drive . . . . .	7-36
Power Cylinder Servo Valve . . . . .	1-12	Quill - Input Drive . . . . .	7-36
Power - External . . . . .	5-144	Quill - Tachometer Drive . . . . .	7-36
Power Lever Adjustment . . . . .	5-1	Quill - Tail Rotor Drive . . . . .	7-36
Power Plant . . . . .	1-2		
Power Plant and Related Systems . . . . .	1-3	R	
Power Requirements - External . . . . .	16-10	Radio Compass . . . . .	10-7
Power Train Depreservation . . . . .	16-8	Racks - Litter . . . . .	4-25
Power Train Intermediate Storage . . . . .	16-5	Rear View Mirror . . . . .	4-25
Power Train Short Term Storage . . . . .	1-2	Rebuild - Definition of . . . . .	B-2
Power Train System . . . . .	7-1	Receptacle - External Power . . . . .	12-8
	5-140	Recording Alternate Fuel . . . . .	1-15
Power Turbine Control Adjustment . . . . .	5-136	Recording Emergency Fuel . . . . .	4-16
Power Turbine Governor . . . . .	5-4	Reel - Inertia . . . . .	1-2
Power Turbine Group . . . . .	10-10	References . . . . .	A-1
Power Turbine Tachometer Generator . . . . .	11-21	Registers - Heater . . . . .	11-15
Power Unit - Auxiliary . . . . .	5-7	Regulator Preservation - Fuel . . . . .	15-8
Precautions - Engine Maintenance . . . . .	16-2	Regulator Valve Adjustment - Pressure . . . . .	5-126
Preparation - Flyable Storage . . . . .	16-9	Regulator - Voltage . . . . .	12-13
Preservation - Accident Engine . . . . .	16-9	Relay - Battery . . . . .	12-17
Preservation - Damaged Engine . . . . .	16-8	Relay - Bus Control . . . . .	12-12
Preservation - Fuel Regulator . . . . .	16-9	Relay - External Power . . . . .	12-8
Preservation Renewal . . . . .	10-11	Relay - Generator Field Control . . . . .	12-13
Pressure - Engine Oil Indicator System . . . . .	10-12	Relay - Gun Firing . . . . .	14-7
Pressure - Engine Oil Transmitter . . . . .	10-13	Relay - Non-Essential Bus . . . . .	12-13
Pressure - Fuel Indicator . . . . .	5-126	Relay - Reverse Current . . . . .	12-12
Pressure Regulator Valve Adjustment . . . . .	11-9		
Pressure Switches - Heater Air . . . . .	5-104		
Pressure Switch - Oil . . . . .	5-87		
Pressure System - Torquemeter . . . . .			

SUBJECT	PAGE
Relay - Starter	12-18
Release - Cargo	4-23
Release Mechanism - Manual	4-29
Relief Valve - Transmission	7-33
Renewal - Preservation	16-9
Repair - Definition of	B-2
Repair - Engine Minor	5-10
Replace - Definition of	B-2
Reporting Improvements	1-1
Requirements - Inspection	1-2, 3-1
Reseating - Torquemeter Valve	5-105
Rescue Hoist	4-33
Rescue Hoist Boom	4-40
Rescue Hoist Control Box	4-38
Rescue Hoist Hook	4-40
Rescue Hoist Limit Switch	4-38
Rescue Hoist Overload Control	4-40
Rescue Hoist Pendant Control	4-40
Reservoir - Hydraulic	1-19
Resistor - Thermocouple Lead Spool	6-15
Retirement Schedule	10-14
Retrieval of Downed Aircraft	3-37
Reverse Current Relay	1-20
Rheostat	12-12
Rocket Actuator Bracket	12-41
Rocket Adjustable Link	14-13
Rocket Crank Assembly	14-13
Rocket Installation	14-13
Rocket Launcher and Adapter	14-10
Rocket - 2.75 Inch	14-13
Roof Windows - Cabin	14-10
Rotary Pump - Torquemeter	4-19
Rotor Blade - Main	5-99
Rotor Blade Sweeping - Main	8-18
Rotor Blade - Tail	8-12
Rotor Control Cables - Tail	8-37
Rotor and Controls Depreservation	8-43
Rotor Control Pedals - Tail	9-20
Rotor Control Quadrant - Tail	16-10
Rotor and Controls Intermediate Storage	9-16
Rotor and Controls - Short Term Storage	9-17
Rotor Controls - Tail	16-8
Rotor Drive Quill - Tail	16-5
Rotor Drive Shaft - Tail	9-1
Rotor Gearbox - Tail	7-36
Rotor Ground Check - Main	7-37
Rotor Group - Main	1-18
Rotor Group - Tail	7-42
Rotor Hub - Main	8-7
Rotor Hub Servicing - Main	1-2
Rotor Hub - Tail	1-2
Rotor - Main	8-12
Rotor Mast - Main	8-24
Rotor Pedal Adjuster - Tail	1-18
Rotor Pitch Control Quill - Tail	8-37

SUBJECT	PAGE
Rotor Tachometer Generator	10-10
Rotor - Tail	8-1
RPM Limit Warning System	8-37
	12-18
S	
Sand and Dust Separator	5-53
Schedules - Overhaul and Retirement	3-37
Scissors and Sleeve	8-33
Scoops - Air	11-12
Scope - Manual	1-1
Screen - Intake	5-51
Screen - Transmission Oil Pump	7-33
Sealing Compounds	5-8
Seats - Armored	4-12
Seat Belts Crew	4-16
Seat Belts - Troop	4-16
Seat Covers - Crew	4-14
Seats - Pilot and Copilot	4-12
Seats - Troop	4-14
Separator - Sand and Dust	5-53
Service - Definition of	B-1
Serviceability - Standards of	3-41
Servicing	1-15
Servicing Battery	1-20
Servicing - Fuel	1-15
Servicing - Intermediate Storage	16-2
Servicing - Short Term Storage	16-2
Servo Valve - Power Cylinder	6-23
Shaft Alignment - Main Drive	7-23
Shaft Couplings - Drive	7-10
Shaft Covers - Drive	4-41
Shaft Hangers - Drive	7-39
Shaft - Main Drive	7-7
Shaft - Tail Rotor Drive	7-37
Shoes - Skid	4-46
Short Term Storage	16-1
Short Term Storage - Airframe	16-3
Short Term Storage - Avionics	16-5
Short Term Storage - Battery	16-5
Short Term Storage - Engine	16-4
Short Term Storage - Fuel System	16-4
Short Term Storage - Helicopter	16-3
Short Term Storage - Hydraulic	16-5
Short Term Storage - Instruments	16-5
Short Term Storage - Landing Gear	16-5
Short Term Storage - Power Train	16-5
Short Term Storage - Rotor and Controls	16-5
Short Term Storage Servicing	16-2
Shoulder Harness	4-16
Shutoff Valve - Fuel	5-71
Sight Gage - Transmission Oil	7-34
Sight Light Panel	14-14
Sighting - Mark 8	14-15
Sighting Station - Armament	14-7
Skid Shoes	4-46
Skid - Tail	4-44
Sleeve - Collective	8-30



SUBJECT	PAGE	SUBJECT	PAGE
Sleeve and Scissors . . . . .	8-33	Stores Support - External . . . . .	15-4
Smoke Generator - XM52 . . . . .	14-15	Strainers - Engine Oil . . . . .	5-96
Solenoid Valve - Fuel Control . . . . .	5-117	Strainer - Fuel . . . . .	5-76
Solenoid Valve - Starting Fuel . . . . .	5-69	Strainers - Fuel Control . . . . .	5-130
Special Inspections . . . . .	3-3	Strainer - Main Fuel . . . . .	5-68
Special Tools and Equipment . . . . .	1-20	Straps - Torsion . . . . .	8-18
Soundproofing Blankets . . . . .	4-20	Sump - Fuel Tank . . . . .	5-71
Stabilizer Bar . . . . .	8-26	Support Equipment - Ground . . . . .	1-2
Stabilizer Bar Dampers . . . . .	1-18	Support - External Pylon . . . . .	15-4
	8-28	Support - External Stores . . . . .	15-4
Standards of Serviceability . . . . .	3-41	Suspension - External Cargo . . . . .	4-21
Standby Compass . . . . .	10-8	Swashplate . . . . .	8-30
Starter-Generator . . . . .	5-109	Sweeping - Main Rotor Blade . . . . .	8-12
Starter Relay . . . . .	12-18	Switch - Fuel Flow . . . . .	5-75
Starting Fuel Solenoid Valve . . . . .	5-69	Switches - Heater Air Pressure . . . . .	11-9
Starting Nozzles . . . . .	5-76	Switches - Heater Thermal . . . . .	11-10
Static Line - Paratroop . . . . .	4-29	Switch - Oil Pressure . . . . .	5-104
Stick - Collective Control . . . . .	9-3	Switch - Rescue Hoist Limit . . . . .	4-38
Storage of Aircraft . . . . .	1-2	Synchronized Elevator . . . . .	4-42
	16-1	Synchronized Elevator Control . . . . .	9-3
Storage - Airframe Flyable . . . . .	16-3		9-22
Storage - Airframe Intermediate . . . . .	16-5	Systems Description . . . . .	1-2
Storage - Airframe Short Term . . . . .	16-3		
Storage - Avionics Intermediate . . . . .	16-8	T	
Storage - Avionics Short Term . . . . .	16-5	Tachometer Drive . . . . .	5-47
Storage - Battery Intermediate . . . . .	16-8	Tachometer Drive Quill . . . . .	7-36
Storage - Battery Short Term . . . . .	16-5	Tachometer Dual System . . . . .	10-9
Storage - Categories of . . . . .	16-1	Tachometer - Gas Producer Generator. . . . .	10-11
Storage - Engine Flyable . . . . .	16-3	Tachometer - Gas Producer System . . . . .	10-10
Storage - Engine Intermediate . . . . .	16-6	Tachometer - Power Turbine Generator. . . . .	10-10
Storage - Engine Permanent . . . . .	16-9	Tachometer - Rotor Generator . . . . .	10-10
Storage - Engine Short Term . . . . .	16-4	Tail Boom . . . . .	4-41
Storage - Flyable . . . . .	16-1	Tail Rotor . . . . .	8-1
Storage - Fuel System Flyable . . . . .	16-3		8-37
Storage - Fuel System Short Term . . . . .	16-4	Tail Rotor Blade . . . . .	8-37
Storage - Helicopter Intermediate . . . . .	16-5		8-43
Storage - Helicopter Short Term . . . . .	16-3	Tail Rotor Controls . . . . .	9-1
Storage - Hydraulic Intermediate . . . . .	16-8	Tail Rotor Control Cables . . . . .	9-20
Storage - Hydraulic Short Term . . . . .	16-5	Tail Rotor Control Pedals . . . . .	9-16
Storage - Instruments Intermediate . . . . .	16-8	Tail Rotor Control Quadrant . . . . .	9-17
Storage - Instruments Short Term . . . . .	16-5	Tail Rotor Drive Quill . . . . .	7-36
Storage - Intermediate . . . . .	16-1	Tail Rotor Drive Shaft . . . . .	7-37
Storage - Intermediate Fuel System . . . . .	16-8	Tail Rotor Gearbox . . . . .	1-18
Storage - Landing Gear Intermediate . . . . .	16-8		7-42
Storage - Landing Gear Short Term . . . . .	16-5	Tail Rotor Group . . . . .	1-2
Storage - Power Train Intermediate . . . . .	16-8	Tail Rotor Hub . . . . .	8-37
Storage - Power Train Short Term . . . . .	16-5	Tail Rotor Hydraulic Cylinder . . . . .	6-27
Storage Preparation - Flyable . . . . .	16-2	Tail Rotor Pedal Adjuster . . . . .	9-16
Storage - Rotor and Controls Intermediate . . . . .	16-8	Tail Rotor Pitch Control Quill . . . . .	9-17
Storage - Rotor and Controls Short Term. . . . .	16-5	Tail Skid . . . . .	4-44
Storage Servicing - Intermediate . . . . .	16-2	Tailpipe - Exhaust . . . . .	5-61
Storage - Short Term . . . . .	16-1	Tailpipe Fairing . . . . .	4-11
Storage - Short Term Servicing . . . . .	16-2	Tank - Engine Oil . . . . .	5-93
Storage - Utility Equipment		Tank - External Auxiliary Fuel . . . . .	15-1
Intermediate . . . . .	16-8	Tank Sump - Fuel . . . . .	5-71
Stored Helicopters - Inspection of . . . . .	16-1	Temperature Control Valve . . . . .	11-13
Stores - Non-Armament External . . . . .	1-2	Temperature - Engine Oil Indicator . . . . .	10-13
	15-1		

SUBJECT	PAGE	SUBJECT	PAGE
Temperature - Exhaust Gas Indicator . . .	10-14	Transmitter - Torque Pressure . . . . .	10-12
Temperature - Transmission Oil Indicator . . . . .	10-16	Transmitter - Transmission Oil Pressure	10-16
Test - Definition of . . . . .	B-1	Trim Adjustment - Fuel . . . . .	5-127
Test Flight Inspections . . . . .	3-24	Troop Seats . . . . .	4-14
Test Hydraulic System . . . . .	6-11	Troop Seat Belts . . . . .	4-16
Test - Hydraulic System Pressure . . . . .	6-13	Troubleshooting - Engine . . . . .	5-13
Testing - Hydraulic System . . . . .	6-9	Tubes . . . . .	1-3
Thermal Switches - Heater . . . . .	11-10	Tubes - Control . . . . .	8-36
Thermal Valve - Oil Cooler . . . . .	5-95	Turbine Control Adjustment - Power . . .	5-140
Thermal Valve - Transmission Oil . . . . .	7-35	Turbine Governor - Power . . . . .	5-136
Thermobulb - Transmission . . . . .	7-33	Turbine Group - Power . . . . .	5-4
Thermocouple - Exhaust . . . . .	5-61	Turbine - Power Tachometer Generator . .	10-10
Thermocouple Lead Spool Resistor . . . . .	10-14	Turbo Blower . . . . .	5-95
Thermostat - Cabin . . . . .	11-12	Turn and Slip Indicator . . . . .	10-4
Thermoswitch - Transmission . . . . .	7-33		
Tie-Down - Cargo . . . . .	4-21	U	
Tires . . . . .	1-3	Unit - Auxiliary Power . . . . .	11-21
Tools - Special . . . . .	1-20	Unit - Ignition . . . . .	5-106
Torquemeter Oil Pressure . . . . .	5-99	Upper Door Windows . . . . .	4-19
Torquemeter Pressure System . . . . .	5-87	Use of Engine Oil . . . . .	5-89
Torquemeter Rotary Pump . . . . .	5-99	Utility Equipment Intermediate Storage . .	16-8
Torquemeter Transmitter Check . . . . .	5-104	Utility Systems . . . . .	1-2
Torquemeter Valve Reseating . . . . .	5-105		11-1
Torque Pressure Indicator System . . . . .	10-12	V	
Torque Pressure Transmitter . . . . .	10-12	Vacuum System . . . . .	11-21
Torque Values . . . . .	1-20	Valve Adjustment - Pressure Regulator . .	5-126
	5-7	Valve - Anti-Icing Air . . . . .	5-60
Torsion Straps . . . . .	8-18	Valve - Bleed Air Control . . . . .	11-5
Touch-up Painting . . . . .	1-20	Valve - Bleed Air Heat Distribution . . . .	11-5
Towing . . . . .	1-12	Valve - Bleed Air Mixing . . . . .	11-5
Train System - Power . . . . .	7-1	Valve - Combustion Chamber Drain . . . . .	5-50
Transformer . . . . .	12-29	Valves - Drain . . . . .	1-15
Transmission Chip Detector . . . . .	7-34	Valve - Fuel Check . . . . .	5-75
Transmission Cowling . . . . .	4-11	Valve - Fuel Control Solenoid . . . . .	5-117
Transmission Magnetic Plug . . . . .	7-34	Valve - Fuel Shutoff . . . . .	5-71
Transmission - Main . . . . .	7-26	Valve - Hot Air Mixing . . . . .	11-13
Transmission Mounts . . . . .	7-27	Valves - Irreversible . . . . .	6-26
Transmission Oil Capacity . . . . .	1-18	Valve Manifold - Fuel Check . . . . .	5-69
Transmission Oil Cooler . . . . .	7-35	Valve - Oil Cooler Thermal . . . . .	5-95
Transmission Oil Filter . . . . .	7-27	Valve - Power Cylinder Servo . . . . .	6-23
	7-29	Valve Reseating - Torquemeter . . . . .	5-105
Transmission Oil Jets . . . . .	7-32	Valve - Starting Fuel Solenoid . . . . .	5-69
Transmission Oil Manifold . . . . .	7-33	Valve - Temperature Control . . . . .	11-13
Transmission Oil Pressure Indicator . . . .	10-16	Valve - Transmission Oil Thermal . . . . .	7-35
Transmission Oil Pressure Transmitter . . .	10-16	Valve - Transmission Relief . . . . .	7-33
Transmission Oil Pump Screen . . . . .	7-33	Values - Torque . . . . .	1-20
Transmission Oil Sight Gage . . . . .	7-34		5-7
Transmission Oil System . . . . .	1-18	Vanes - Variable Inlet Guide . . . . .	5-20
	7-27	Variable Inlet Guide Vanes . . . . .	5-20
Transmission Oil Temperature Indicator . .	10-16	Velocity - Vertical Indicator . . . . .	10-4
Transmission Oil Thermal Valve . . . . .	7-35	Ventilation System . . . . .	11-12
Transmission Relief Valve . . . . .	7-33	Ventilating Air Blower . . . . .	11-9
Transmission Thermobulb . . . . .	7-33	Ventilating and Heating . . . . .	11-1
Transmission Thermoswitch . . . . .	7-33	Vertical Fin Fairing . . . . .	4-44
Transmitter Check - Torquemeter . . . . .	5-104	Vertical Velocity Indicator . . . . .	10-6
Transmitter - Engine Oil Pressure . . . . .	10-12		
Transmitters - Oil Pressure . . . . .	5-104		

SUBJECT	PAGE	SUBJECT	PAGE
Vibrations . . . . .	8-1	Windshield . . . . .	4-18
Vibration - Extreme Low Frequency . . .	8-1	Windshield Wiper . . . . .	11-20
Vibration - High Frequency . . . . .	8-5	Windshield Wiper Blade . . . . .	11-20
Vibration - Low Frequency . . . . .	8-2	Windshield Wiper Motor - Converter . . .	11-20
Vibration - Medium Frequency . . . . .	8-5	Wing . . . . .	4-45
Voltage Regulator . . . . .	12-13	Winterization Equipment . . . . .	11-1
Voltmeter - AC . . . . .	10-16	Wiper Blade - Windshield . . . . .	11-20
Voltmeter - DC . . . . .	10-16	Wiper Motor - Converter - Windshield . .	11-20
		Wiper - Windshield . . . . .	11-20
W		Wiring Data . . . . .	13-1
Weather Covers . . . . .	1-12	Wiring Diagrams . . . . .	1-2
Weight and Balance . . . . .	1-2	Work Platforms . . . . .	4-20
		X	
Windows - Adjustable . . . . .	4-19		
Windows - Cabin Lower . . . . .	4-19	Y	
Windows - Cabin Roof . . . . .	4-19		
Windows - Cargo Door . . . . .	4-20	Z	
Windows - Upper Door . . . . .	4-19		

By Order of the Secretary of the Army:

Official:

**KENNETH G. WICKHAM,**  
*Major General, United States Army,*  
*The Adjutant General.*

**W. C. WESTMORELAND**  
*General, United States Army,*  
*Chief of Staff.*

DISTRIBUTION:

To be distributed in accordance with DA Form 12-31 (qty rqr block no. 70)  
requirements for Organizational Maintenance Instructions for UH-1D aircraft .

☆U.S. GOVERNMENT PRINTING OFFICE: 1969-346-461/108 2